

**PARTICIPANT PROFILES & LIST FOR
COMMUNITY-BASED
COLLABORATIVE CONSERVATION WORKSHOP**

Feb 28th - March 2nd, 2018

Conveners

Shawn Johnson
Managing Director
Center for Natural Resources &
Environmental Policy
University of Montana
Missoula, Montana
406-381-2904
shawn.johnson@umontana.edu



Shawn Johnson is Managing Director of the Center for Natural Resources & Environmental Policy at the University of Montana and Co-director of the Center's graduate certificate program in Natural Resources Conflict Resolution. In addition to his on-campus activities, Shawn organizes and leads strategic planning and capacity building workshops for a wide variety of organizations focused on natural resource policy and management and has served as a facilitator and mediator on issues ranging from land use planning and forest management to conservation priority setting and large landscape conservation.

Heather Knight
Associate Director of Practice
Center for Collaborative Conservation
Colorado State University
Fort Collins, Colorado
970-631-7645
heather.knight@colostate.edu



Heather Knight hails from Australia, where she received her education in Ecology and Natural Resources Management and secondary teaching, followed by graduate research on human disturbance of wildlife on the Great Barrier Reef. Heather immigrated to the US in 1991 and for almost 25 years led a community-based conservation effort for The Nature Conservancy in northern Colorado. In 2016, Heather joined the Center for Collaborative Conservation at Colorado State University as the Associate Director of Practice. Heather and her husband, Rick, live and steward a place in Livermore, Colorado.

Matthew McKinney
Director
Center for Natural Resources
& Environmental Policy
University of Montana
Missoula, Montana
406-459-5166
matthew.mckinney@umontana.edu



Matthew McKinney is Director of the Center for Natural Resources & Environmental Policy at the University of Montana. He has over 30 years of experience in community-based collaborative conservation, beginning with a forest health project in Summit, Grand, and Eagle counties in Colorado's ski country. He regularly serves as a facilitator, educator, and policy analyst. He has worked on land, water, and natural resources issues in the American West, as well as throughout North America and around the world. In addition to working on specific cases, Matt has helped design and manage a number of collaborative networks, partnerships, and organizations. Matt co-chairs a university-wide graduate program on Natural Resource Conflict Resolution and is a Senior Partner at the Consensus Building Institute.

Logistical Support

Sarah Carroll
Graduate Research Fellow
Colorado State University
(530) 514 -1622
slcarroll314@gmail.com



Sarah is a PhD Student in ecology advised by Dr. Robin Reid, and a current research assistant at CSU's Center for Collaborative Conservation. She graduated from UC Davis in 2013 with a B.S. in Wildlife, Fish, and Conservation Biology where she studied community-based conservation in Namibia. She has since worked with Greater-sage grouse in Nevada, vertebrate community ecology in Hawaii, and songbird breeding behavior in Panama. Before beginning graduate studies at CSU, she worked for NASA's Applied Earth Sciences program on remote sensing research. She is interested in collaborative approaches to wildlife and landscape conservation.

Louisa Gibson
Administrative Coordinator
Center for Collaborative Conservation
Colorado State University
Fort Collins, Colorado
970-692-3907
louisa.gibson@colostate.edu



Louisa Gibson is an Administrative and Communications Coordinator with CSU's Center for Collaborative Conservation. With a background in geography and conservation planning, she has worked with the National Park Service, The Nature Conservancy, and Colorado State University over the last 15 years.

Ch'aska Huayhuaca
Research Coordinator
Center for Collaborative Conservation
Colorado State University
Fort Collins, Colorado
(970) 219-2320
chaska@gmail.com



Ch'aska Huayhuaca has worked in various roles at Colorado State University's (CSU) Center for Collaborative Conservation since 2010. Cha is a PhD candidate in the Graduate Degree Program in Ecology at CSU. Building on a database she compiled of over 150 collaborative initiatives in the state of Colorado, her research focuses on how different kinds of collaboratives form, develop strategies, and change over time. She has a B.S. in Natural Resources from Cornell University and an M.S. in Human Dimensions of Natural Resources from Colorado State University.

Kim Skyelander
Associate Director
Center for Collaborative Conservation
Colorado State University
Fort Collins, Colorado
218-220-1514
kim.skyelander@colostate.edu



Kim Skyelander has a B.S. degree in Wildlife Biology from Utah State University, a M.S. degree in Environmental Studies from the University of Montana, and a Ph.D. in Natural Resources from the University of Idaho. She worked professionally for the U.S. Forest Service for 16 years as a wildlife biologist, public affairs specialist, assistant district ranger, and tribal government liaison. She left the USFS to pursue a career in teaching and taught natural resources classes for eight years at the Salish Kootenai College on the Flathead Indian Reservation in Montana, and also taught environmental education and interpretation classes at the University of Idaho. Kim was also the executive director of Wolf Ridge Environmental Learning Center, a large residential outdoor school in northeastern MN similar to the Teton Science Schools in Jackson, WY. Currently Kim is the Associate Director for the Center for Collaborative Conservation at CSU.

Sponsors

John Hayes
Dean
Warner College of Natural Resources
Colorado State University
Fort Collins, Colorado
970-491-1649
John.hayes@colostate.edu



John Hayes serves as Dean of the Warner College of Natural Resources at Colorado State University. In this role he is responsible for fiscal and administrative leadership of the college and oversees five academic departments and several programs and centers. He previously served as Director of the Florida Agricultural Experiment Station, as Dean for Research for the Institute of Food and Agricultural Sciences and as Chair of the Department of Wildlife Ecology and Conservation at the University of Florida and as a faculty member and Associate Dean for International Programs in the Oregon State University College of Forestry.

Don Hijar
Owner

Pawnee Buttes Seed Company
Greeley, Colorado
970-396-4867
info@pawneebutteseed.com



Don Hijar graduated from CSU in 1974 with a degree in animal science. He then worked with the Soil Conservation Society from January 1975 to April 1982. Don has been in the seed business since August of 1984 and founded Pawnee Buttes Seed in August of 1998. Don has been the past president of the Colorado Seed Industry Association, Associated Landscape Contractors of Colorado and the Colorado Section of the Society of Range Management. Don has memberships in many associations such as the Rocky Mountain Golf Course Superintendent; Rocky Mountain Sports Turf Management Association; Rocky Mountain Sod Growers Association; Colorado Open Lands; Bird Conservancy of the Rockies; and Colorado Native Plant Society. He also served 2 terms on the Colorado Department of Agriculture's Weed Advisory Board.

Peter Pollock
Manager of Western Programs
Lincoln Institute of Land Policy
Boulder, Colorado
303-247-0245
ppollock@lincolnst.edu



Peter Pollock is the Manager of Western Programs at the Lincoln Institute of Land Policy. Since July 2006, he has worked with the Department of Planning and Urban Forestry to manage the Institute's joint programs with the Sonoran Institute and the Center for Natural Resources and Environmental Policy at the University of Montana. For 25 years he worked for the City of Boulder, Colorado as a current and long-range planner, and served as director of the city's Planning Department from 1999 to 2006. Peter began his career as the staff urban planner for the National Renewable Energy Lab in Golden, Colorado, where he specialized in solar access protection, energy-conserving land use planning, and outreach to local communities. During the 1997–1998 academic year, he was a Loeb Fellow at the Harvard University Graduate School of Design and a visiting fellow at the Lincoln Institute. He received his master's degree in Landscape Architecture at the University of California at Berkeley in 1978 and his bachelor's degree in Environmental Planning at the University of California at Santa Cruz in 1976.

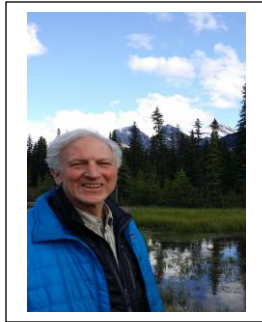
Robin Reid
Director
Center for Collaborative Conservation
Colorado State University
Fort Collins, Colorado
970-215-5883
Robin.Reid@colostate.edu



Robin Reid is the Director of the Center for Collaborative Conservation and Professor in the Department of Ecosystem Science and Sustainability at CSU. She leads education, research and community engagement projects in the drylands of Africa, Asia and North America. Her current work focuses on how local, collaborative governance works around the world and its social and ecological outcomes. With a collaborative team of diverse stakeholders, she co-founded the Peaks to People, a new watershed investment fund for the American West. From 1992-2007, she lived and worked in east Africa, doing research with pastoral peoples and wildlife.

Breakout Group Facilitators

Rich Alper
Mediator, Executive Committee
Center for Collaborative Conservation
Colorado State University
Fort Collins, Colorado
240-475-7776
rsalperesq@aol.com



Richard Alper earned his law degree from the Georgetown University Law Center. Rich did his post-graduate work in environmental law at the George Washington University Law School. He is co-founder and past chair of the Conflict Resolution Center of Montgomery County and served as co-chair of the community and public affairs section of the Maryland State Dispute Resolution Commission. Rich serves as a board member on the Big Thompson Watershed Coalition, the Poudre River Library Trust, the Environmental Science Advisory Board of Larimer County (chair), the Executive Committee of the Center for Collaborative Conservation at Colorado State University and the Board of the Colorado Education Initiative-STEM. Rich has served numerous organizations, including Leadership Council of the Environment and Public Policy Section of the Association for Conflict Resolution, and Alternative Dispute Resolution Section Council in the Maryland State Bar Association. Since 1993 he has mediated, facilitated and arbitrated 200 cases in federal and state courts, for public agencies, non-profits and private clients. He has taught courses in conflict resolution, arbitration, negotiation, commercial real estate, land use and environmental law courses at numerous academic institutions. He also serves on the facilitator roster of the U.S. Institute for Environmental Conflict Resolution.

Wanda Burget
Principle and Co-Owner
Accord Business Solutions
Executive Director
Wyoming Mining Natural
Resource Foundation
Aladdin, Wyoming
307-896-9190
wburget@accordresourcesolutions.com



Wanda is a co-owner and principal of Accord Resource Solutions; a woman-owned natural resource-focused consultancy based in Wyoming and serves as the Executive Director of the Wyoming Mining Natural Resource Foundation (Foundation). The Foundation is currently managing a large landscape-scale conservation effort created to benefit the Greater sage-grouse which was initiated by the mining industry in southwestern Wyoming. Prior to starting her consultancy, Wanda served as the Vice President of Environmental Services for Norwest Corporation based in Salt Lake City, Utah for 3 years and worked for Peabody Energy Corporation for 29 years as director of Sustainable Development. Wanda currently serves in the Board of Directors of the Thunder Basin Grasslands Prairie Ecosystem Association, the Vore Buffalo Jump Foundation, the Board of Supervisor's for the Crook County Natural Resources District, Women's Mining Coalition Board of Directors and is an appointed member of the National Coal Council.

Retta Bruegger
Colorado State University Extension
Rangeland Specialist
Rangeland Mgmt.
Grand Junction, Colorado
970-988-0043
Retta.Bruegger@colostate.edu



Retta Bruegger is the regional specialist in range management for Colorado State University Extension in western Colorado. She is a former Center for Collaborative Conservation (CCC) Fellow and Fulbright Student Scholar to Mongolia. In the CCC fellowship program, and in her current job, she has a keen interest collaborative methods as a way to empower ranchers and land managers to make the best possible decisions for ecological, economic, and social outcomes on lands they manage. She is originally from western Colorado and enjoys being outside.

Tony Cheng
Director
Forest Restoration Institute
Colorado State University
Fort Collins, Colorado
970-491-1900
tony.cheng@colostate.edu



Tony Cheng is director of the Colorado Forest Restoration Institute and Professor in the Department of Forest & Rangeland Stewardship at Colorado State University. His primary research interest is in forest governance, policy and administration, with a focus on multi-stakeholder collaborative approaches to promote resilient social-ecological systems linked to forest landscapes. As director of CFRI, Tony oversees programs to develop, compile, and apply locally-relevant scientific information to achieve forest restoration and wildfire hazard reduction goals. Born and raised in eastern Washington's Palouse country, Tony has a PhD in Forestry from Oregon State University, a MS in Forestry from the University of Minnesota, and a BA in Political Science from Whitman College in Walla Walla, WA.

Rox Hicks
WLCI Coordination Team
Grant Steward
Little Snake River Conservation
District
Baggs, Wyoming
307-383-7860 x13
rox_hicks@fws.gov



In 1981, Rox Hicks graduated from CSU in Wildlife Biology. She then worked for a coal producer and private consultants. In 1987, she began her 30-year career with U.S. Fish and Wildlife Service (USFWS) at the National Elk Refuge, Jackson, Wyoming. After that, she continued with the USFWS as a Partners biologist in Montana. Currently she works for Ecological Services/Wyoming Field Office, in Cheyenne, Wyoming, as a Wyoming Landscape Conservation Initiative Grant Steward and Collaborative Conservation Practitioner. Rox concentrates on building partnerships and acts as a project coordinator to improve fish and wildlife habitat for both public and private interests in the Southwest Wyoming focus area.

Heather Johnson
Partners for Wildlife Coordinator
USFWS Region 6
Lakewood, Colorado
303-594-8780
heather_johnson@fws.gov



Heather Johnson is the Regional Coordinator for the Partners for Fish and Wildlife Program in the Mountain-Prairie Region with the U.S. Fish and Wildlife Service (USFWS). She has been in this capacity since 2009 and with the Partners for Fish and Wildlife Program since 2004. Heather has an Associate of Science degree in Agriculture and Wildlife Biology from Northwest College in Wyoming and a Bachelor's of Science in Wildlife Biology from the University of Montana. Heather has worked in a number of capacities for the USFWS Mountain-Prairie Region over the past 28 years. She also spent 10 years in the Alaska Region and three years in Washington, D.C. She has worked in Refuge Management, Migratory Birds, External Affairs, International Affairs and Partners. Heather is a Wyoming Native, currently living in Evergreen, Colorado.

Emily Olsen
Colorado Program Manager
National Forest Foundation
Denver, Colorado
720-219-0682
eolsen@nationalforests.org



Emily Olsen is the Colorado Program Manager for the National Forest Foundation. She works on projects across Colorado, including the new Find Your Fourteener campaign, Camp Hale Treasured Landscape, Ski Conservation Fund, and other initiatives. Emily has worked for the NFF since 2013, starting with Conservation Connect, the NFF's technical assistance delivery program. In this role, she worked with Forest Service staff and community partners to plan and facilitate collaborative processes on the Idaho Panhandle, Angeles, Nantahala & Pisgah, Lolo and other National Forests. Prior to joining the NFF, Emily worked at the Center for Natural Resources and Environmental Policy in Missoula, MT. She holds a M.S. from the University of Montana's College of Forestry and Conservation, and a certificate in Natural Resources Conflict Resolution.

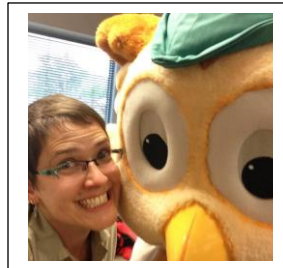
Resource People

Alan Barton
Collaboration Program Manager
New Mexico Forest and Watershed
Restoration Institute
New Mexico Highlands University
Las Vegas, New Mexico
505-426-2081
awbarton@nmhu.edu



Alan Barton is Collaboration Program Manager at the New Mexico Forest & Watershed Restoration Institute in Las Vegas, New Mexico. He has 35 years experience working in participatory natural resources management in Latin America, the Pacific Northwest, the Southeast and the Southwestern U.S. Alan has a B.A. in Sociology and Spanish from the University of California, Berkeley, an M.S. in Forest Policy & Land Use Planning from the University of Washington, a J.D. in Natural Resource & Environmental Law from the University of New Mexico, and a Ph.D. in Community & Environmental Sociology from Cornell University.

Dana Coelho
Urban and Community Forestry
USFS Rocky Mountain Region
Lakewood, Colorado
720-666-8063
dcoelho@fs.fed.us



Dana Coelho is Urban & Community Forestry Program Manager for the Rocky Mountain Region of the US Forest Service. In this capacity, she fosters a diversity of partnerships at the local, state, regional, and national level that support the appreciation, planting, and care of trees in cities and towns. Working collaboratively with professionals, students, volunteers, educators, and researchers is the best way to build the social license and opportunities needed to create truly sustainable communities. She has worked with the Forest Service for 10 years, and holds masters' degrees from the University of Maryland in conservation biology, sustainable development, and public policy. Her undergraduate career at the University of Virginia spanned urban and environmental planning, architecture, and environmental science.

Maria Fernandez-Gimenez
Associate Director of Research
Center for Collaborative Conservation
Colorado State University
Fort Collins, Colorado
970- 297-8181
Maria.Fernandez-Gimenez@ColoState.edu



María Fernández-Giménez is Associate Director for Research of CSU's Center for Collaborative Conservation and Professor of Rangeland Social-ecological Systems. A rangeland and human ecologist, María studies community-based and collaborative resource management; integration of science and local/traditional knowledge; and rancher and pastoralist decision-making and outcomes. María practices participatory, transdisciplinary research that engages resource users, managers and policy-makers as partners in the research process. Geographically, her research centers on the western US, Mongolia and Spain.

Claire Harper
Program Manager
USFS, Rocky Mountain Region,
State & Private Forestry and
Tribal Relations
Watershed Partnerships,
Forest Legacy,
Community Forests & Open Space
Lakewood, Colorado
303-895-6157
claireharper@fs.fed.us



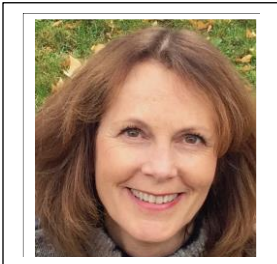
Claire Harper is a watershed partnership manager for the Rocky Mountain Region of the US Forest Service and oversees partnerships with water utilities and other community stakeholders to collaboratively restore forests in critical watersheds. Claire also manages the Region's Forest Legacy and Community Forest programs which provide grants to state and local partners to protect environmentally and socially important forests. Previously, she served as the Forest Service's national open space coordinator and as a Presidential Management Fellow in Washington D.C. Other experience includes helping manage a family forestry and sawmill business in southern Colorado. Claire received a Master's in natural resource policy & economics from Duke University and a Bachelor's in biology from the University of Colorado.

Paul Hudnut
Director
Global Social & Sustainable
Enterprise
Colorado State University
College of Business
Fort Collins, Colorado
970-218-9392
Paul.Hudnut@ColoState.edu



Paul Hudnut teaches in the College of Business at Colorado State University and serves as director of their Global Social & Sustainable Enterprise MBA program. Paul is a co-founder of Envirofit International, Ltd., a leader in designing and selling cleaner, more efficient cook stoves in the developing world. In 2010, he received the Olympus Innovation Award for his work in technology innovation and entrepreneurship education. Paul is a board member of the New Belgium Family Foundation, Watsi and 10.10.10. He earned his BA from Colorado College and his law degree from University of Virginia and completed the Program for Management Development at the Harvard Business School.

Kimberly Kernan
Natural Resources Facilitator
University of Utah
Stegner Center for Land,
Resources & the Environment
Environmental
Dispute Resolution Program
Salt Lake City, Utah
408-482-4015
kernan.kim@gmail.com



Kimberly Kernan works at L.L.M. Environmental Law and is a representative at the University of Utah's Wallace Stegner Environmental Dispute Resolution Program (EDR). Kim facilitates groups working on natural resource projects. Previously, she has represented parties and projects in the private, public, and non-profit sectors. Kim's work has focused on complex development projects and the related land use and environmental issues. Projects have involved multiple stakeholders and interests. In 2016, Kim received a fellowship from the University of Utah's Global Center for Sustainability and Change to complete an interdisciplinary sustainability project and work with the EDR program. The EDR's program focuses on using mediation and collaborative processes to create dialogue and understanding to problem solve in the environmental and natural resources areas.

Tahnee Robertson
Director and Facilitator
SW Decision Resources
Tucson, Arizona
520-444-6105
tahnee@swdresources.com



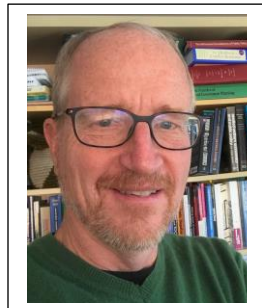
Tahnee Robertson is a professional facilitator, mediator and collaboration practitioner and the Director of Southwest Decision Resources; a facilitation group based in Arizona specializing in landscape scale collaboration. For 20 years, her work has focused on designing and facilitating the development of a wide range of collaborative efforts, including watershed management, forest planning and management, large landscape conservation, sustainable recreation, community and regional visioning, youth engagement, and the resolution of community and resource management conflicts. She leads a team of six professionals working in Arizona and the Southwest. Tahnee earned a Bachelor's in Biology from Grinnell College and a Masters in Natural Resources from Cornell University. She is a founding member of the Cross-Watershed Network Steering Committee, a member of the Board of Directors of the Cienegas Watershed Partnership, and is listed on the U.S. Institute for Environmental Conflict Resolution's Roster of Environmental Conflict Resolution and Consensus Building Professionals.

Natalie Sexton
Social Scientist
USFWS Human Dimensions Branch
Natural Resources Program Center
Fort Collins, Colorado
970-266-2935
natalie_sexton@fws.gov



Natalie Sexton is chief of the Branch of Human Dimensions of the Natural Resource Program Center of the USFWS (Service) National Wildlife Refuge System. Before coming to the Service in 2012, she spent the last 10 years of her career with U.S. Geological Survey, where she provided human dimensions research and expertise to Refuges. In her current role, Natalie's focus is putting tools and resources into the hands of USFWS practitioners to address the human dimensions of conservation and bring more social science to complex conservation decisions. Natalie has a master's degree in Wildlife Biology from Colorado State University.

Steven Smutko
Spicer Wyoming Excellence Chair
Ruckelshaus Institute
University of Wyoming
Laramie, Wyoming
307-766-2703
steve.smutko@uwyo.edu



Steve Smutko is a professor in the Haub School of Environment & Natural Resources and the Department of Agricultural & Applied Economics at the University of Wyoming. Steve's research is focused on, application and efficacy of participatory decision making in natural resources management and policy, decision making in coupled human and natural systems, and environmental leadership. Through the Ruckelshaus Institute, he works with local governments, state and federal agencies, and the private and nonprofit sectors to enhance participatory decision-making on complex environmental and natural resource policy issues. He provides assistance and training in participatory decision-making, negotiation, and decision analysis. Steve teaches courses in negotiation, negotiation analysis, decision analysis, and natural resources problem solving at the graduate and undergraduate levels.

Jessica Western
Research Scientist, Collaboration
Program in Natural Resources
Ruckelshaus Institute
University of Wyoming
Laramie, Wyoming
307-766-5048
jessica.western@uwyo.edu



Jessica Western is a Senior Research Scientist in Human Dimensions in Natural Resources and Director of the Collaboration Program in Natural Resources in the Ruckelshaus Institute of the University of Wyoming. As Director of the Collaboration Program, she has created the curriculum for this six-session collaborative leadership program that runs during the course of a year and provides training to natural resource professionals in collaborative problem-solving, facilitation and leadership skills specifically related to natural resource policy and science contexts. She provides other types of collaborative problem solving trainings for specific purposes and audiences. She has been assessing, designing and facilitating collaborative public processes for 20 years, related to endangered species, forest, wildlife and other issues on multiple-state, statewide and smaller scales. Jessica has conducted social psychological research regarding the relationship between people and natural resources and taught natural resources policy related subjects for 20 years. She has published her work using survey and Q-methodology related to research regarding natural resource policy, collaborative processes, biomass utilization, and forest planning. Jessica is also on the National Roster of Dispute Resolution and Consensus Building Professionals with the US Institute for Environmental Conflict Resolution.

Arizona Practitioners

Mark Brehl
Arizona Dept. of Fire & Forest Management
Greater Flagstaff Forest Partnership
and AZ Fire Adapted Communities Network
Flagstaff, Arizona
928-525-6024
mbrehl@dffm.az.gov



Mark Brehl has nearly 20 years of experience serving in forest management and wildfire response related positions with the Arizona Department of Forestry and Fire Management, Flagstaff Fire Department, National Park Service, private forest management industry and non-governmental organizations. Working with Arizona's forest residents, he strives to communicate the ecological and Firewise principles necessary to help balance societal needs with the sustainability of healthy forests and a reduced risk of wildfire. Mark continues to serve his local community and state in forest management, land use planning, fire suppression, prevention and public outreach.

Tom Sheridan
Board of Directors
Altar Valley Land Alliance
Professor, University of Arizona
Dagoon, Arizona
520-850-1121
tes@email.arizona.edu



Thomas Sheridan has written or co-edited fourteen books and monographs including *Stitching the West Back Together: Conservation of Working Landscapes* (with Susan Charnley and Gary Nabhan: U Chicago, 2014). Tom is chairman emeritus of the Canoa Ranch Foundation and chair of Pima County's Canoa Ranch Conservation Committee; former chair of the Ranch Conservation Technical Advisory Team of Pima County's Sonoran Desert Conservation Plan; and member of Pima County's Conservation Acquisition Commission. He is past president of the Anthropology & Environment Section of the American Anthropological Association, and currently serves on the board of the Altar Valley Conservation Alliance, a not-for-profit organization of ranchers dedicated to the conservation of open space, biodiversity, and working ranches in the Altar Valley southwest of Tucson.

Karen Simms
Natural Resources Division Manager
Pima County
Las Cienegas Watershed Partnership
Tucson, Arizona
520-724-5216
Karen.simms@pima.gov



Karen Simms works for Pima County, Arizona as a Natural Resources Division Manager within the Natural Resources, Parks, and Recreation Department. In this position, Karen has management responsibility for 155 Pima County open space properties including four mountain parks and twelve ranches. Prior to working with Pima County, Karen worked for nearly 30 years with the Bureau of Land Management (BLM) in southern Arizona before retiring in September 2017. She held positions with BLM as a Wildlife Biologist, Planning Coordinator, and National Conservation Area Manager/Assistant Field Manager. Karen is well known locally and nationally for her expertise in collaborative planning and adaptive management on public lands. Karen graduated from the University of Arizona in May 1989 with a MS degree in Wildlife Management. She received her BS degree in Zoology from the University of California, Davis in 1983.

Nancy Steele
Executive Director
Friends of the Verde and Verde
Watershed Restoration Coalition
Cottonwood, Arizona
213-393-7407
nancys@verderiver.org



Nancy Steele is the Executive Director at Friends of the Verde River. Nancy's career has included serving as Executive Director at the Council for Watershed Health, Conservation Director at Arroyos & Foothills Conservancy (which she founded in 2000 and ran for eleven years), and several interim executive director stints. Nancy also worked for the State of California developing regulations to control diesel emissions, reducing childhood lead poisoning, and enforcing hazardous waste laws. Nancy's board service has included the Infrastructure Funding Alliance and the Marine Conservation Research Institute.

Peter Warren
Board of Directors
Malpai Borderlands Group
Tucson, Arizona
520-390-6791
plwarren1951@outlook.com



Peter Warren completed his undergraduate degree in Environmental Biology at U.C. Santa Barbara. He moved to AZ in 1974 to attend graduate school at University of Arizona and received an MSc degree in Ecology and Evolutionary Biology from U of A where he studied the relationship between desert rodent distribution and vegetation structure. He worked for seven years at the University of Arizona Remote Sensing Center studying patterns of distribution and changes in vegetation of the Southwest. In 1986 Peter joined The Nature Conservancy AZ Chapter and held several positions; Ecologist, Grasslands Conservation Program Manager, and Field Representative. For the last fifteen years, Peter has focused his work with rancher-led community groups such as Altar Valley Conservation Alliance and Malpai Borderlands Group to support large-landscape conservation. He is currently a board member of the Malpai Borderlands Group.

Colorado Practitioners

Casey Davenhill
Executive Director
Colorado Watershed Assembly
Denver, Colorado
303-345-1675
casey@coloradowater.org



Casey Davenhill has over 30 years of accounting experience working for an international accounting firm and numerous small businesses and non-profits as a consultant. Cherry Creek is Casey's home watershed where she has directed the watershed forum: Cherry Creek Stewardship Partners for nearly 20 years. Currently Casey is the Executive Director of the Colorado Watershed Assembly. Casey has a long history of coordination with many important programs and projects that have been facilitated by these two organizations. Casey sees the role of non-profits as essential in partnership with agencies and government to promote the role of citizens in the protection of their public resources.

Russell Davis
Board of Directors
Partners for Conservation
Wineinger-Davis Ranch
Karval, Colorado
719-892-5427
davisrdt@gmail.com



The Wineinger-Davis Ranch is located on the eastern plains of Colorado, and over the last 70 years has grown from 400 acres to over 12,000. After finishing college, Russell returned to the ranch where he grew up to run the day-to-day operations on the ranch with the help of his brothers. The ranch runs 500 black and red angus mother cows, 40 Angus bulls, and 400 yearlings. The ranch has a variety of habitats including short grass prairie, cottonwood/willow riparian corridor, playas, and sand sagebrush, and hosts associated species suites including, but not limited to, mountain plover, swift fox, black-tailed prairie dogs, burrowing owls, plains leopard frog, long-billed curlews, American avocets, and massasauga rattlesnakes. The ranch actively considers these species in its cattle management decisions. Russell drives the conservation efforts of the Wineinger-Davis Ranch and is a strong advocate for such efforts in the surrounding ranching communities. In addition to the easements and partnerships he actively manages on his ranch, Russell hosts the Karval Plover Festival and the Ranching and Wildlife Youth Program each year.

Heather Dutton
Manager
San Luis Valley Water
Conservancy District and
Rio Grande Headwaters Partnership
Alamosa, CO
719-589-2230
heather@slvwcd.org



Heather Dutton grew up on a potato and barley farm in the San Luis Valley of Southern Colorado, where she gained a love for the outdoors. She works as the Manager of the San Luis Valley Water Conservancy District; managing an augmentation program for domestic, commercial, and municipal wells in five counties. Heather previously worked to improve the health of the Rio Grande as the Director of the Colorado Rio Grande Restoration Foundation and the Rio Grande Headwaters Restoration Project. Heather was appointed to represent the Rio Grande Basin on the Colorado Water Conservation Board in 2017, and serves on other boards. Heather earned a Masters of Agriculture and Bachelor of Science Degrees in Natural Resources Management and Rangeland Ecology with a concentration in Restoration Ecology from Colorado State University.

Carol Ekarius
Chief Executive Officer
Coalitions & Collaboratives
Coalition for the Upper South Platte
Lake George, Colorado
719-748-0033
carol@uppersouthplatte.org



Carol Ekarius has been the Executive Director for the Coalition for the Upper South Platte since 1999. She is also the Founder and CEO of Coalitions & Collaboratives Incorporated (COCO Inc). Carol brings decades of experience in governmental and nonprofit management. She is a successful freelance writer and the author of nine books, including *Small-Scale Livestock Farming: A Grass-based Approach for Health, Sustainability, and Profit*, and most recently, *The Fleece and Fiber Sourcebook*. Her articles have appeared in magazines such as *Alternative Medicine*, *Green Builder*, *Hobby Farms*, *Mother Earth News*, *Plenty*, *Western Horseman*, and *The Writer*. As an author, Carol addresses a diversity of topics and specializes in sustainable, small-scale agriculture and farming and environmental solutions. Carol holds a Civil Engineering Degree from the University of Colorado at Denver.

Aaron Kimple
Program Director
Mountain Studies Institute
San Juan Headwaters Forest
Health Partnership Coordinator
Durango, Colorado
970-749-7916
akimple@mountainstudies.org



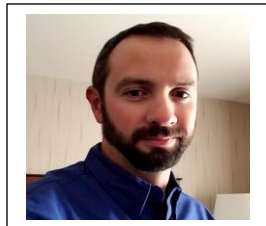
Aaron Kimple is Program Director, Forest Health for Mountain Studies Institute in Durango, Colorado, the Program Coordinator for San Juan Headwaters Forest Health Partnership, and Program Coordinator for the Two Watersheds, Three Rivers, Two States Cohesive Strategy Partnership (2-3-2). Aaron develops and manages programs, organizes community involvement in mountain science. He has more than 10 years of experience in project management, 20 years of experience with landscape ecology and environmental monitoring, and 10 years' experience in public facilitation and community outreach. He facilitates partnership development and promotes community involvement. Aaron manages watershed level projects, forest health initiatives, and facilitates community stakeholder groups. Mr. Kimple works with the United States Forest Service, Bureau of Land Management, National Park Service, regional tribal entities, and the local governments of Archuleta, San Juan, La Plata, and San Miguel Counties.

Lindsay Murdoch
Program Coordinator
Cross Watershed Network
Grand Junction, Colorado
970-256-7400 ext. 101
lmurdoch@crosswatershed.net



Lindsay Murdoch is currently located in Grand Junction, Colorado. Lindsay earned her BA in Integrated Environmental Science from Colorado College in 2013. In 2015, Lindsay joined the Cross-Watershed Network as an AmeriCorps VISTA volunteer and made her transition to full-time Tamarisk Coalition staff in 2017 where she continues to coordinate the Cross-Watershed Network and support inter-watershed exchange across the Southwest.

John Rizza
Small Acreage Management Specialist
NRCS, and Colorado State University
Extension Specialist
Grand Junction, Colorado
970-361-3797
john.rizza@colostate.edu



John Rizza grew up in the northeast and worked closely with a logger and arborist. John received his B.S. in Natural Resources Management with a minor in Forestry at CSU in 2003. He then became an ISA Certified Arborist license while working as a Vegetation Manager with a utility company on the West Coast. John completed a master's degree in Forestry in 20017 from the University of Tennessee. John spent a few years working in the inland northwest as a consulting forester helping private landowners manage their resources. Before his current position, he was a Forester on the Colorado State Forest where he managed 72,000 acres with a multitude of interests in consideration. John's desire to help private landowners in Colorado to sustainably manage their land, brought him to Colorado State University Extension as the Small Acreage Management Specialist on the west slope during the last 6 years.

Idaho Practitioners

Eric Grace
Executive Director
Kaniksu Land Trust
Sandpoint, Idaho
208-263-9471 O
208-627-9205 C
eric@kaniksu.org



Eric Grace has been the Executive Director of the Kaniksu Land Trust, in Sandpoint Idaho, since August 2011. Prior to this, Eric led the Genesee Valley Conservancy for 14 years. Since taking over at KLT, Eric has guided the organization through a rebuilding phase, broadening the conservation and outreach programs to make conservation relevant to all members of the community. Eric grew up on horseback, fishing, and exploring the woods. These experiences taught him the importance of natural world and led to his career in land conservation. Eric lives in Sandpoint, Idaho.

Brandon Hoffner
Executive Director
Henry's Fork Foundation
Ashton, Idaho
208-652-3567
bhoffner@henrysfork.org



Brandon has been the executive director since September 2011. Brandon is a life-long conservationist who has focused his education and career on protecting and restoring some of the West's most idyllic landscapes. Born in an eastern Colorado farming community, he earned a B.S. at Colorado State University in wildlife biology and rangeland ecology, with additional training in agricultural business management and GIS. He has worked at Colorado State University, Colorado Parks and Wildlife, Pheasants Forever, Wyoming Game and Fish Department, and the Rocky Mountain Elk Foundation.

Jamie Laatsch
Communications Manager
Henry's Fork Foundation
Ashton, Idaho
208- 652-3567
jamie@henrysfork.org



Jamie Laatsch joined the Henry's Fork Foundation in July of 2015 as the Conservation and Outreach Coordinator, a new position combining conservation technician, outreach, and education. Jamie is originally from northern Virginia, but comes to eastern Idaho from Chicago. Jamie has a B.S. from the University of Illinois in natural resources and environmental sciences and an M.S. from Utah State University in human dimensions of ecosystem science and management. In 2018, Jamie takes on a new role as Communications Manager where she will continue to call on her background in environmental and social sciences.

Toni Ruth
Executive Director
Salmon Valley Stewardship
Salmon, Idaho
208-757-1686
toniruth@salmonvalley.org



Toni moved to Salmon, Idaho, in 2005. She has been with Salmon Valley Stewardship (SVS) as a founding member since her arrival to Lemhi County. Toni became the new Executive Director of SVS in October 2016 and enjoys working with a passionate staff and board to promote a sustainable economy and healthy environment in the stunning Salmon River Region of Central Idaho. Toni studied mountain lions for over 25 years, publishing numerous scientific articles, popular articles and is in the final stages of completing a book, *Yellowstone Cougars: Ecology Before and During Wolf Restoration*.

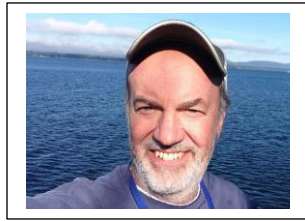
Amy Verbeten
Executive Director
Friends of the Teton River
Driggs, Idaho
208-354-3871
amy@tetonwater.org



Amy Verbeten is originally from Walla Walla, Washington. She learned some of her most important lessons about collaborative conservation and western water issues while working on a local family farm for 9 years. She went on to formally study watershed science and education, earning a B.S. from the University of Washington and an M.A. from Prescott College. Since 2007, Amy has worked for Friends of the Teton River, a non-profit organization located in Driggs, Idaho, working with the community to protect and conserve clean water, healthy streams, and a thriving wild fishery in the Teton River Watershed. She has served as the organization's Executive Director since 2012.

Montana Practitioners

Jim Burchfield
Chair of Southwest Crown Collaborative
Chair of Lolo Restoration Committee
Advisory Board Member Montana
Forest Collaboration Network
Missoula, Montana
406-546-1166
burchfield.jamesa@gmail.com



James Burchfield served as Dean of the College of Forestry and Conservation at the University of Montana from 2008-2015. He retired in August 2015. Trained as both a forester and social scientist, Jim has held positions as Director of the Bolle Center for People and Forests at the University of Montana, Director of the International Forestry Seminar Program at the University of Michigan, Policy Analyst for the U.S. Forest Service's International Program Office, and field forester for the US Forest Service. His research and teaching interests continue to revolve around methods to promote effective public engagement in decisions on public lands and protected areas. He currently leads a multi-party group of landowners, scientists, and managers in a landscape-level restoration project in western Montana.

Gary Burnett
Executive Director
Heart of the Rockies
Missoula, Montana
406-360-0254
gary@heart-of-rockies.org



Gary Burnett is currently the Executive Director of Heart of the Rockies. Gary recently left the Blackfoot Challenge, a well-respected model of community-based conservation. Gary has 30 years of experience in natural resource management and nonprofit development, having worked with and for public and private landowners/managers on land protection and natural resource stewardship. Gary has developed and directed annual fund, major gift and planned giving programs for local, regional and national organizations. He holds a Master's Degree in Wildlife Biology from University of Montana. Gary serves as co-chair of the Southwestern Crown Collaborative of the landscape restoration program, on the leadership team for Rural Voices for Conservation Coalition, the coordinating committee for the Network for Landscape Conservation, and volunteers on the local fire department as a fire fighter and board member, and serves on the Executive Committee for the Board of Sustainable Northwest.

Bill Milton
Musselshell Watershed Coalition
Roundup, Montana
406-323-1771
billmiltonmt@gmail.com



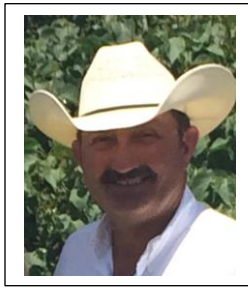
Bill Milton's family has been ranching in Montana since 1956. They have owned and operated their current family ranch in Musselshell County since 1978. Over the last 40 years, Bill has worked with a number of organizations and efforts committed to taking care of land and community. Most recently, he participated as a facilitator with a number of community working groups in Central Montana, covering nine counties, including the Musselshell Watershed Coalition, the Winnett ACES, the CMR Community Working Group, and the Musselshell Valley Community Foundation. Bill has a particular interest in figuring out how ranchers and local communities monitor the health of their working landscapes and communities. Since February of 2016, he has been facilitating a broad and diverse group of partners, called the Rangeland Monitoring Group (RMG), dedicated to finding an effective means to achieve this objective.

Erin Ferris-Olsen
Executive Director
Montana Watershed Coordination Council
Helena, Montana
406-475-1420
erin@mtwatersheds.org



Erin Ferris-Olsen joined Montana Watershed Coordinating Council as Executive Director in June 2015. Erin is a graduate in Environmental Studies and Communication from Carroll College and Natural Resources Law at the University of Oregon. Erin's passion for the Montana landscape evolved through spending her summers surveying wetlands for the Montana Department of Environmental Quality and Natural Heritage Program. She later took her passion for environmental education and conservation abroad and worked on environmental awareness campaigns in Liberia and Belize. Erin enjoys actively promoting to role of community-based conservation in ensuring the resiliency of Montana's landscape for future generations.

Dale and Janet Veseth
Board of Directors
Rancher Stewardship Alliance
Malta, Montana
406-658-2504
djvsth@mtintouch.net



Dale Veseth received a BS and MS in animal Science from Montana State University. Dale has worked on and managed the family ranch for 28 years. Dale is a founding member of the Ranchers Stewardship Alliance and has done board work and been active for the last 14 years. Dale was also a founding member of the Matador Grassbank and continues to be a part of the Grassbank today. Dale recently served 3 terms on the Montana Chapter for The Nature Conservancy.



Janet Veseth was a founding member of the Ranchers Stewardship Alliance for 10 years and helped with the early days of the Matador Grassbank. Janet was a registered nurse for 10 years before she married Dale. Collaboration has always been part of her daily work. Janet has lived and worked on the ranch in south Phillips County, Montana for 20 years. She now lives about 30 miles from the old log cabin her Dad was born. As a nurse, Janet worked with many of the old timers who homesteaded this country. Family ties to the land are strong and long lasting.

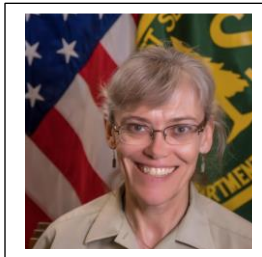
New Mexico Practitioners

Martha Schumann Cooper
The Nature Conservancy
Southwest New Mexico Field
Representative
Silver City, New Mexico
575-590-2594
mschumann@tnc.org



Martha Schumann Cooper has worked for The Nature Conservancy in Southwest New Mexico since 2006. Martha manages stewardship, restoration and monitoring projects on the Gila and Mimbres River Preserves and works with a diverse group of partners in the region to protect the Gila River and foster collaborative forest restoration on the Gila National Forest. Prior to working with The Nature Conservancy, Martha worked in N NM on forest and watershed restoration at the Forest Stewards Guild (formerly the Forest Trust) for over 5 years and Rio Puerco Management Committee for a year. Martha received her M.S. in Forest Ecosystem Science from the University of Maine in 1999 and a BA in Biology from Amherst College in 1995.

Elaine Kohrman
Forest Supervisor
US Forest Service, Cibola
National Forest
Albuquerque, New Mexico
505-221-8297
ekohrman@fs.fed.us



Elaine Kohrman joined the Cibola National Forest and National Grasslands in 2013 as Forest Supervisor. The Cibola covers 1.9 million acres of public lands in New Mexico, Oklahoma and Texas. Previous positions include Branch Chief for Strategic Planning, Budget in the Washington Office; acting Deputy Forest Supervisor on the Colville National Forest, District Ranger on the Prairie City Ranger District on the Malheur National Forest in Oregon. Other assignments include social scientist/economist for forest planning and for the National Hydropower Relicensing Team. She started her career as a wilderness ranger in 1986. She holds a Bachelor's degree in Economics from Colorado State University, a Master's degree in Whole Systems Design from Antioch University, and is a Donella Meadows Leadership Fellow.

Eytan Krasilovsky
Southwest Director
Forest Stewards Guild
Zuni Mountains Collaborative
Santa Fe, New Mexico
505-470-0185
eytan@forestguild.org



Eytan Krasilovsky is the Southwest Director at the Forest Stewards Guild. The program promotes excellence in stewardship by building a sustainable forest-based economy, developing future forestry leaders, practicing ecological forest restoration, and training and educating fire and forest workers and landowners. Eytan develops, funds, and implements projects, to support program goals. The Southwest program currently works on landscape-scale restoration, youth education and training, wildland firefighter training, and effectiveness monitoring. Eytan is involved in several local collaborative efforts to improve forest management and serves on a wildland-urban-interface risk reduction grant review panel. Eytan received his Master's degree from the University of Pennsylvania after working as a field archaeologist in the Northeast and a fire effects monitor and wildland firefighter with the National Park Service.

Rick Merrick
Rural Community Forester
South Central Mountain RC&D
The Otero Working Group
575-937-1789
rmerrick@scmr.cd.org



Rick Merrick has lived in Timberon New Mexico since 1996. He has been a Fire Chief of the Timberon Volunteer Fire Dept. He has owned and operated a tree thinning company and have worked on Government contracted Fire engines. Rick has worked with local groups on Firewise programs and he now works with the Lincoln and Otero county commissioners to help private land owners on thinning projects and the Firewise program. In his capacity as the Rural Community Forester, he is Chair the Otero WUI Working Group where he facilitates meetings that all agencies and organization come together to collaborate on thinning projects across the landscape.

Diedre (Dee) Tarr
District Manager
NRCS, Claunch-Pinto Soil and
Water Conservation District
Greater Rio Grande Watershed
Alliance
Mountainair, New Mexico
505-705-5243
Dierdre.Tarr@nm.nacdnet.net



Diedre (Dee) Tarr began working for Claunch-Pinto Soil and Water Conservation District (CPSWCD) in February 1997; first as a part-time administrative assistant, then in the permanent full time position of District Manager in July 2005. Dee supervises five temporary full-time employees, 1 part-time employee, and manages a \$3.2million budget that includes \$2.8million in grants. Dee is the Project Manager for the Estancia Basin Watershed Health, Restoration and Monitoring Project and the Greater Rio Grande Watershed Alliance. These projects include thirty partners working collaboratively on conservation in North Central New Mexico. CPSWCD is the lead for the North Central New Mexico Watershed Restoration Project that includes 14 soil and water conservation districts and thirty Federal, State, Tribal and NGO partners in Central New Mexico. This project is a Regional Partnership Program grant through the NRCS.

Utah Practitioners

Lorien Belton
Community-based Conservation Program
Jack H. Berryman Institute
Utah State University
Logan, Utah
435-770-2413
lorien.belton@usu.edu



Lorien Belton is a collaborative group facilitator with the Community-Based Conservation Program (CBCP) at Utah State University (USU) in Logan, Utah. She has a bachelor's degree in Earth Systems from Stanford University and a master's degree in Sociology of Natural Resources from USU. At CBCP, she facilitates five of the sage-grouse local working groups, participates in the Utah Partners for Conservation and Development, and facilitates groups in USU academic departments, and other natural resource and strategic planning efforts. Raised in Wyoming, she returned to the West to study collaborative conservation planning in ranching communities. Prior to coming to USU, she spent four and a half years at Rare, in Arlington, Virginia, focusing on making conservation efforts both economically and socially viable for communities around the world. She also manages finance and governance systems for several small nonprofits in Logan, Utah.

Calee Lott
Sagebrush Ecosystem Alliance
Coordinator
Intermountain West Joint Venture
Utah State University
Tremonton, Utah
435-659-4638
calee.lott@usu.edu



Calee Lott grew up in Utah spending her days on the back of a horse moving cattle, in the backhoe doing construction, or on the 4-wheeler changing water. Lott graduated from Utah State University with a major in Interdisciplinary Studies, emphasizing on range management, animal science, and plant science. She is currently finishing her master's degree in Ag. Extension & Education. Lott is the Coordinator for the Sagebrush Ecosystem Alliance. This position supports enhancements of rangeland health based on science and on-the-ground expertise, and works with a wide array of stakeholders focused on conservation and management of the sagebrush ecosystem.

Stephanie Minnaert
Public Lands Coordinator
Grand Staircase Escalante Partners
Escalante River Watershed Partnership
Escalante, Utah
435-826-4737
stephanie@gsenm.org



Stephanie Minnaert moved from a rural farming community in northwestern Illinois for the west to attend school and start her career in 2008. In 2011, Stephanie received a Bachelor's of Environmental Health from Colorado State University. In 2014, she earned a Master's Degree from the University of Denver in Environmental Policy & Management. Stephanie currently works for Grand Staircase Escalante Partners in southern Utah as the Public Lands Program Coordinator for the Escalante River Watershed Partnership. She works with federal, state, nonprofit, and other local project partners to oversee restoration work within the Escalante Watershed.

Jay Olsen
Environmental Specialist
Utah Watershed Coordinating Council
San Pitch Watershed Group
Utah Department of Agriculture
and Food
Salt Lake City, Utah
801-718-0517
jayolsen@utah.gov



Jay Olsen was raised in Ephraim, Utah, on a cattle and sheep ranch. He graduated from Brigham Young University with a Bachelor's Degree in Animal Science in 1977. Following college, Jay returned to the ranch and was self-employed for 36 years. In 2012, Jay accepted a job offer from the Commissioner of the Utah Department of Agriculture and Food where he continues to work today. Jay is on multiple committees including; the State AFO/CAFO Committee, San Pitch Watershed Stewardship Group, Utah Lake Water Quality Study Steering Committee, Water Quality Task Force, Water Quality Standards Workgroup and local irrigation boards. He formerly served as County Farm Bureau President/ board member, Utah Water Quality Board, and Ephraim Irrigation board member.

Wyoming Practitioners

Bob Budd
Executive Director
Wildlife and Natural Resource
Trust
Sage Grouse Initiative
Cheyenne, Wyoming
307-349-5387
bob.budd@wyo.gov



Bob Budd is the Executive Director of the Wyoming Wildlife and Natural Resource Trust, a state program that enhances wildlife habitat and natural resources in Wyoming. Prior to the launch of WWNRT, Bob was manager of Red Canyon Ranch, and Director of Land Management for The Nature Conservancy in Wyoming. Bob spent 15 years with the Wyoming Stock Growers Association, ten as Executive Director. Bob has a Master's of Science in Range Management, and Bachelor of Science in Agricultural Business and Animal Science, all from the University of Wyoming. He is a past-president of the international Society for Range Management, the Wyoming Section of the Wildlife Society, and Greater Cheyenne Chamber of Commerce. He is currently president of the CFD Buckle Club. Bob has facilitated development of management plans for the Big Sandy River and Bighorn Sheep in Wyoming, and Sage-Grouse in Wyoming, Utah and Nevada. He is Chairman of the Wyoming Sage-Grouse Implementation Team and co-chair of the Western Governors Sage-Grouse Task Force. His writings have appeared in a variety of forms, most recently "Otters Dance" in Home Land, and three chapters in Ranching West of the Hundredth Meridian.

Deb Kleinman
Founder & Principal
The Lupine Collaborative
Wyoming Public Lands
Initiative
Laramie, Wyoming
307-314-2385
deb@lupinecollaborative.com



Deborah Kleinman is a consultant providing facilitation, coaching, training, and program management services for organizations, coalitions, and individuals working in natural resources and the environment, climate change, green building and sustainable development, agriculture and food systems, and public health. Deb also works with organizations and groups, providing support, training, and facilitation services in strategic planning, adaptive management, collaborative decision-making, and organizational excellence.

Pat O'Toole
Little Snake River Watershed
Ladder Ranch
Baggs, Wyoming
970-376-6311
h2otoole@gmail.com



Patrick O'Toole has served as the Family Farm Alliance's President since March 2005. O'Toole is a cattle and sheep rancher, with a strong background in irrigated agriculture and Wyoming politics. Pat is on the Board of Directors for Solutions from the Land, Partners for Conservation and a representative to the Intermountain West Joint Venture. The O'Toole ranch has been in his wife's family since 1881. The ranch straddles the Wyoming-Colorado border, and has enabled the O'Toole family the opportunity to view some unique water issues first hand. Carbon County, Wyoming, holds the headwaters of the Little Snake River, a Colorado River tributary, and the North Platte River, a tributary of the Missouri. The Ladder Ranch is a 2014 Leopold Conservation Award winner. O'Toole is an Advisory Board member on AGree—an initiative on long-term food, conservation and agriculture policy issues.

Dave Pellatz
Executive Director/Conservation
Coordinator
Thunder Basin Grasslands Prairie
Ecosystem Association
Bill, Wyoming
307-359-1328
dave.pellatz@tbgpea.org



Dave Pellatz grew up on his family's ranch in eastern Wyoming, and his family and in-laws still have ranches in the Thunder Basin National Grassland. He received degrees in petroleum engineering and geological engineering from New Mexico Tech and worked for Conoco in the Rocky Mountain region and in Houston. After leaving Conoco and owning several different businesses, he completed his masters in Natural Resources Stewardship from CSU and now lives on the edge of the Grasslands. He currently works as the Executive Director and Conservation Coordinator for the Thunder Basin Grasslands Prairie Ecosystem Association and as Range Manager for the Thunder Basin Grazing Association.

Paul Ulrich
Director Government Affairs
& Regulatory
Johan Energy
BLM Resource Advisory Council
Pinedale, Wyoming
303-537-6050
Paul.ulrich@jonahenergy.com



Paul Ulrich is the Director of Government Affairs & Regulatory for Jonah Energy LLC. Paul is a 20-year veteran of the oil and gas exploration and production industry. He is Chairman of the Petroleum Association of Wyoming and is Past Chairman of the BLM Resource Advisory Council. Paul has also served as an oil and gas representative on Wyoming Governor Mead's Sage Grouse Implementation Team since the team was established in 2007. Paul is a native of Wyoming.