

Heart Beat of the World – the Crown of the Continent

Hands Across the Border - September 14, 2016

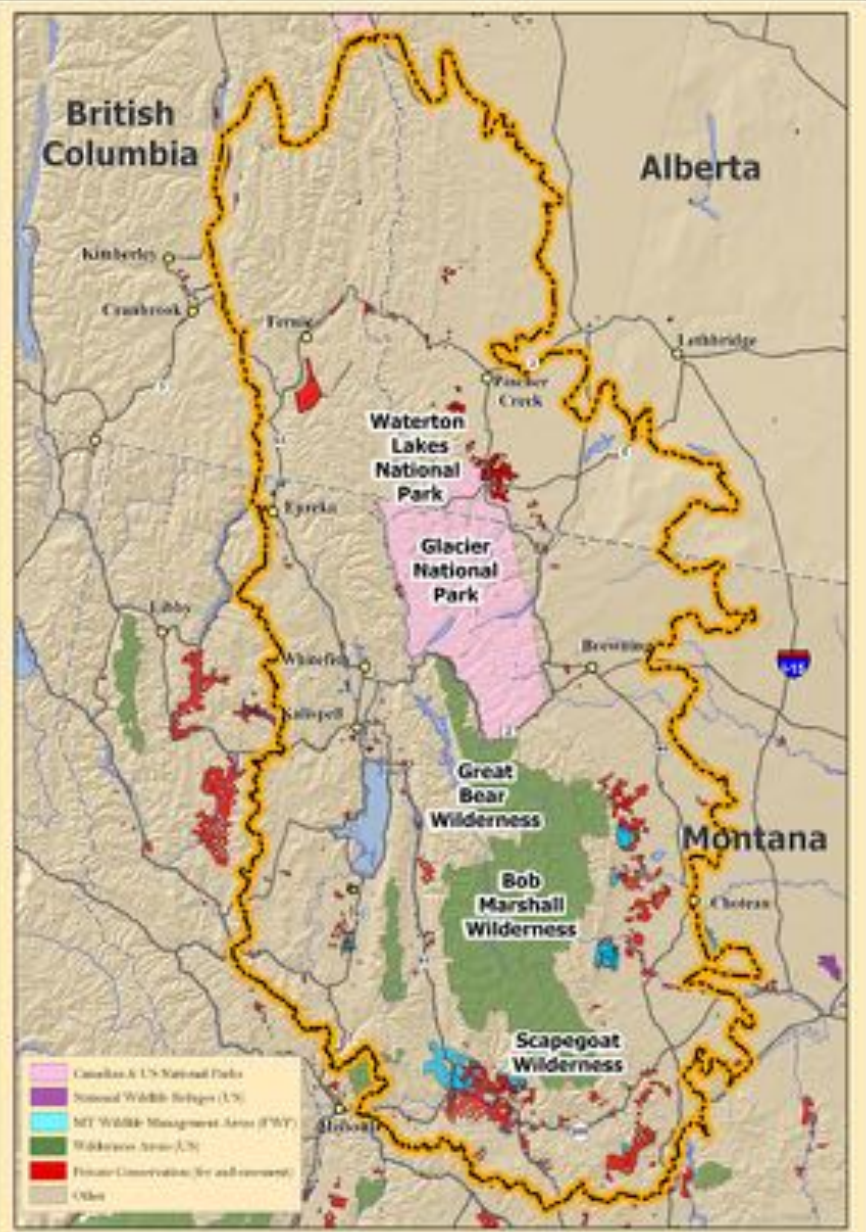


www.crownroundtable.org

Gary M. Tabor – gary@largelandscapes.org

THE CENTER FOR
LARGE LANDSCAPE
CONSERVATION





Crown of the Continent
 ~ Protected Areas ~





Crown Ecoregions

Canadian Rockies

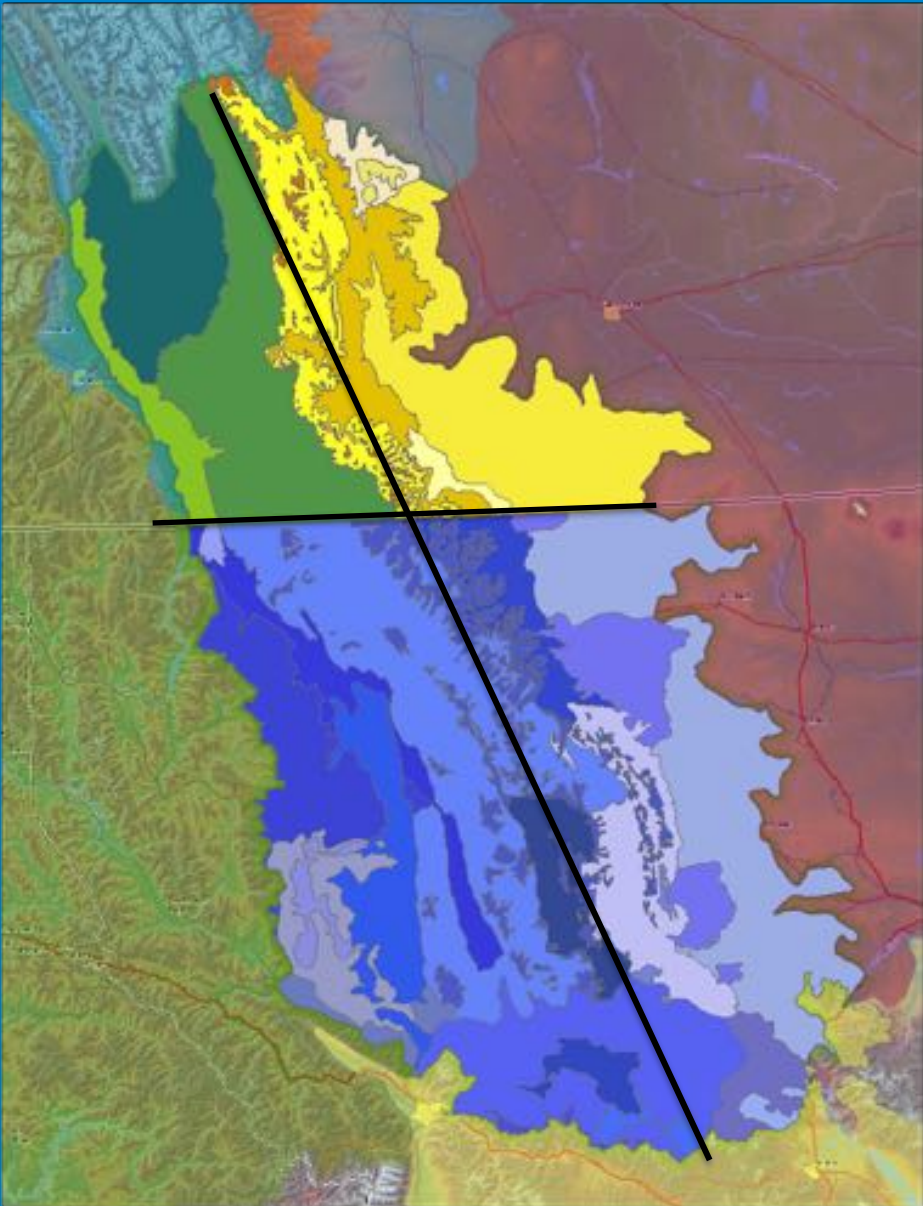
Columbia Mountains/Northern Rockies

Middle Rockies

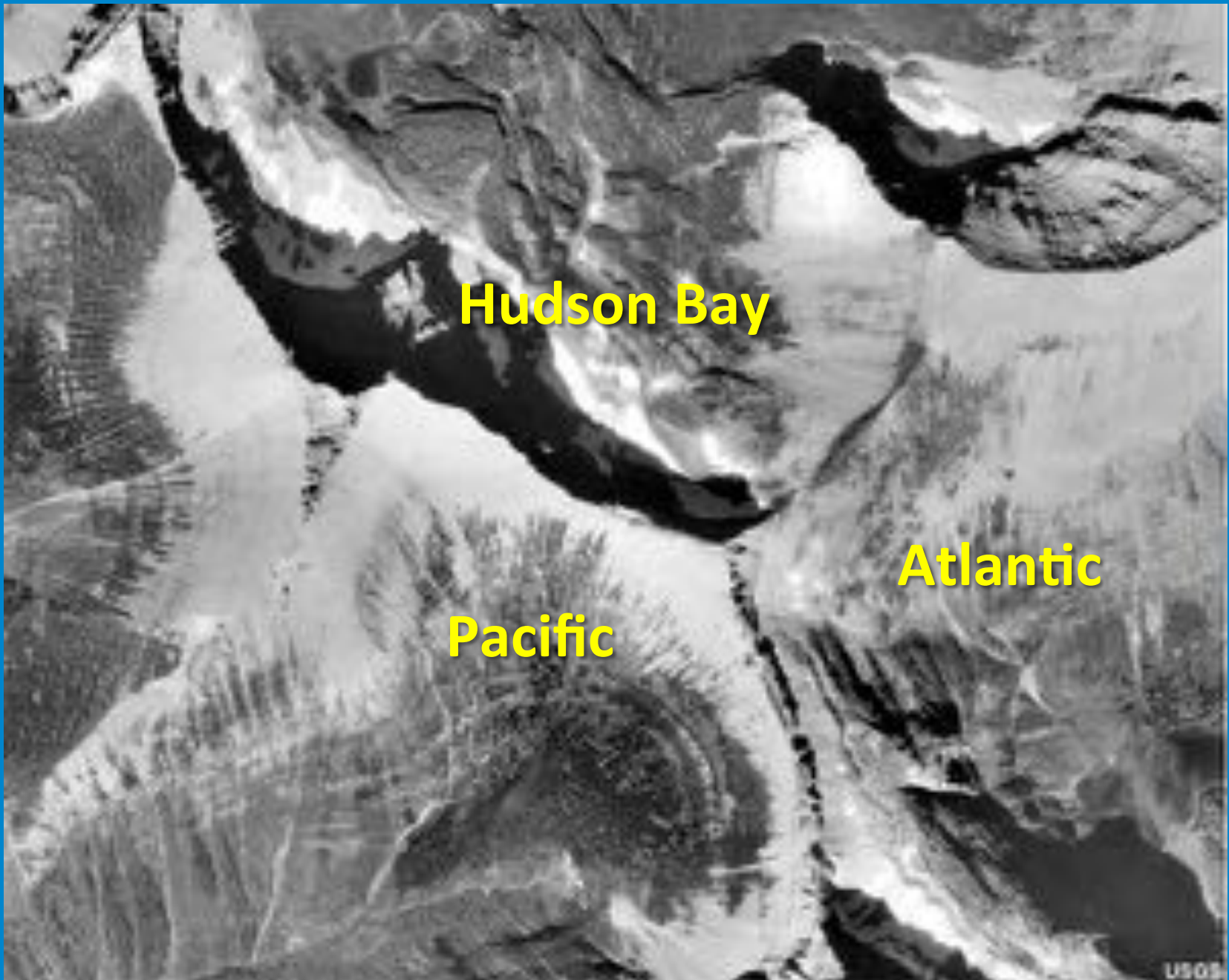
Clear Hills and Western Alberta Uplands

Aspen Parkland

Northwestern Glaciated Plains



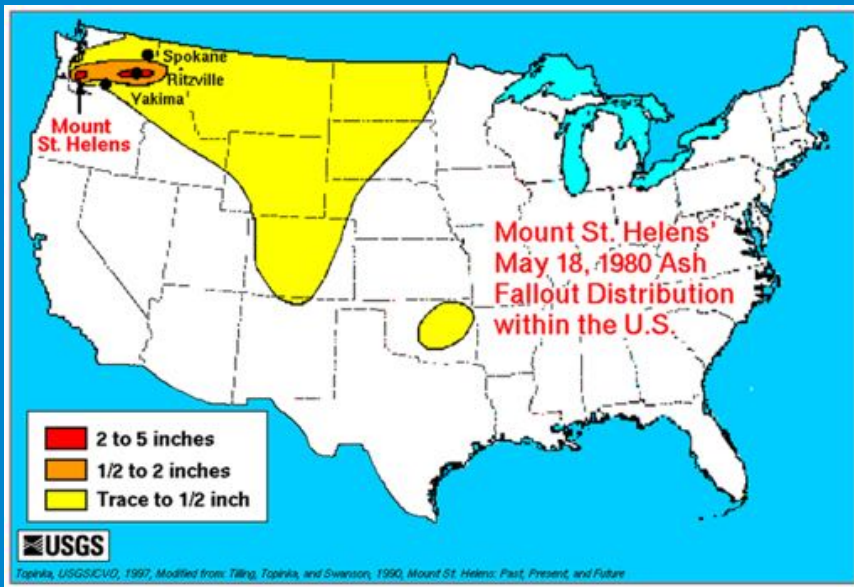
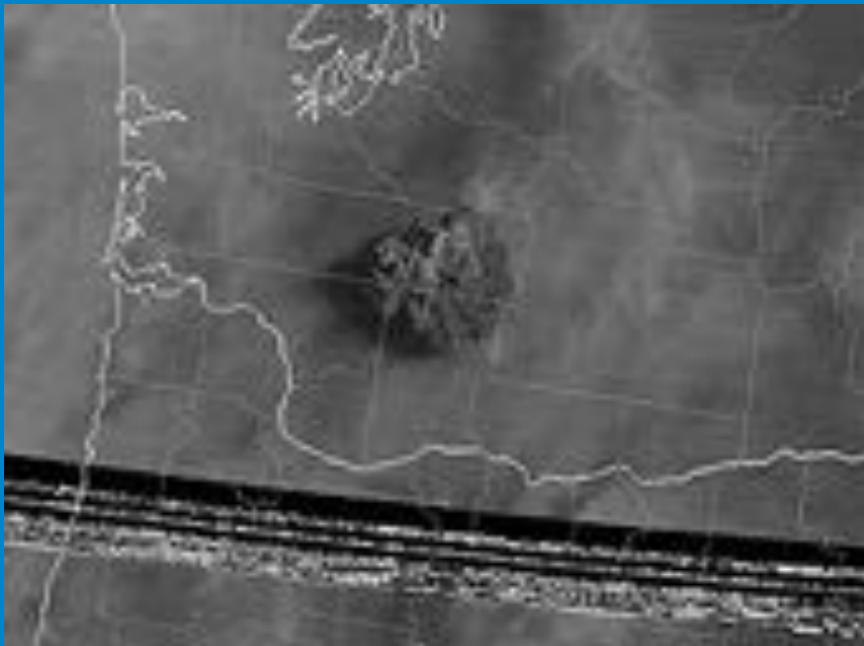
In the Crown...Triple Divide Peak where three continental watersheds connect...



International River Basins of NORTH AMERICA







Connecting Social Scale with Ecological Scale

How can we scale up

Large landscape conservation is about –
getting people to conserve land at larger ecologically meaningful scales



Protected Area Overlay of Connectivity Route Centrality



This map shows connectivity routes that are expected to be most permeable to movement among areas with low degrees of human modification. Betweenness centrality is a metric describing the relative importance of a given connectivity route to the broader landscape configuration. Protected areas (GAP Status 1 and 2 and 3 in the central and eastern US - defined by EPA Ecoregions) are overlaid for reference. This map is intended for illustrative purposes only.

Data Sources:

Theobald, D.M., Reed, S.E., Fields, K., & Soule, M. 2012. Connecting natural landscapes using a landscape permeability model to prioritize conservation activities in the United States. *Conservation Letters* 5(2): 123-133.

U.S. Geological Survey, Gap Analysis Program (GAP). 2012. *Protected Areas Database of the United States (PADUS)*, version 1.3 Combined Feature Class.

Overlay map produced by: Center for Large Landscape Conservation (406) 586-8082 www.large-landscapes.org



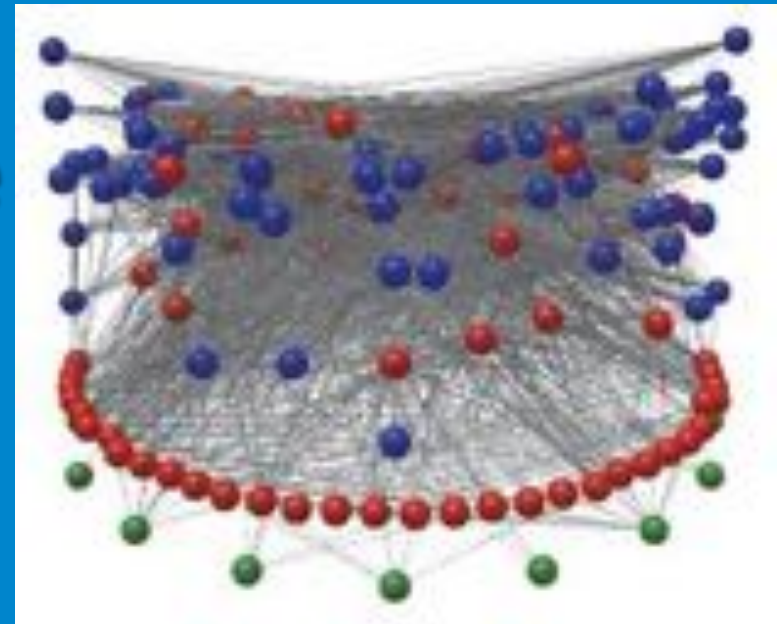
Organizational Design for 21st Century Challenges

Networked Communication

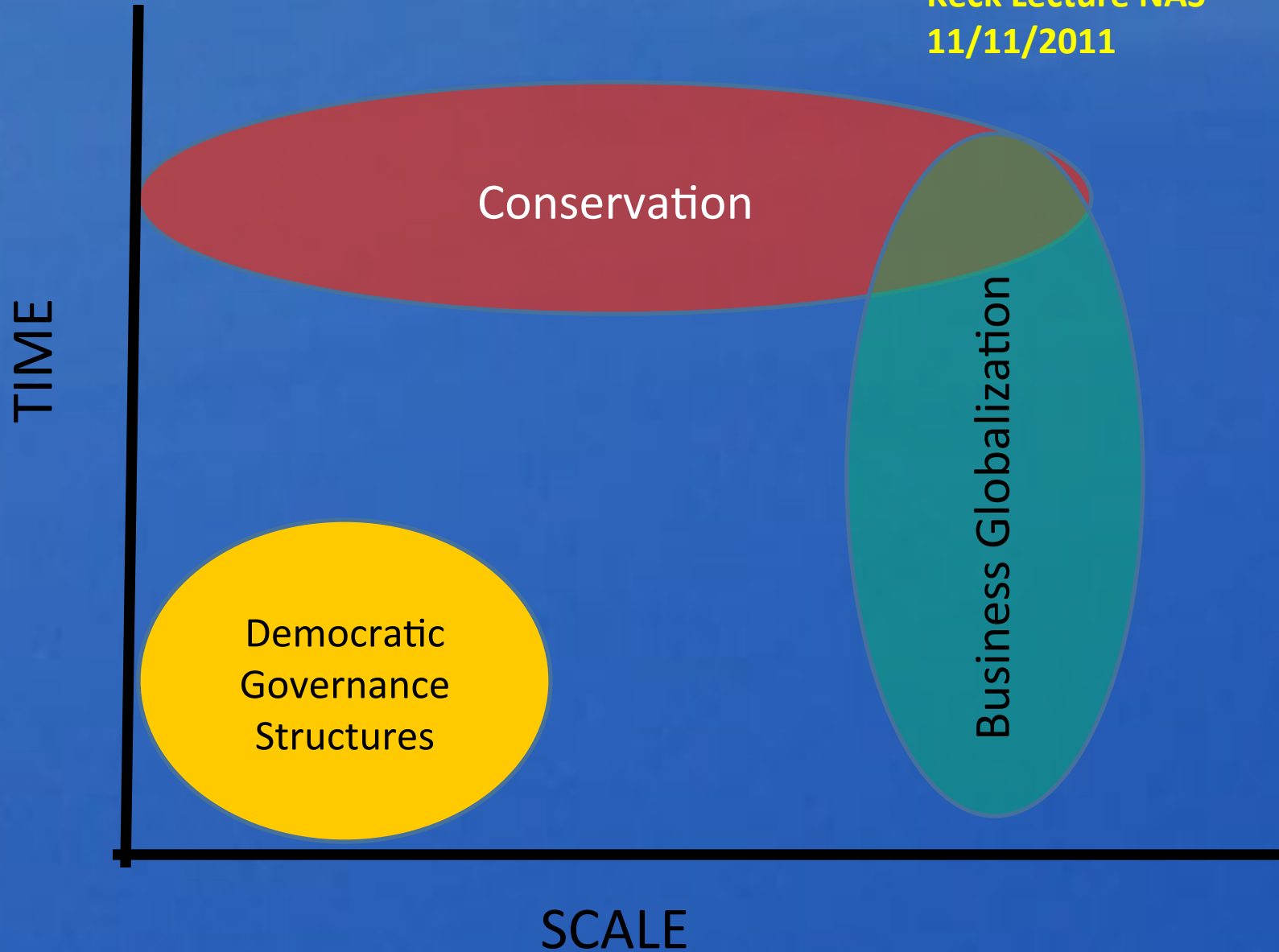
Networked Science

Networked Governance

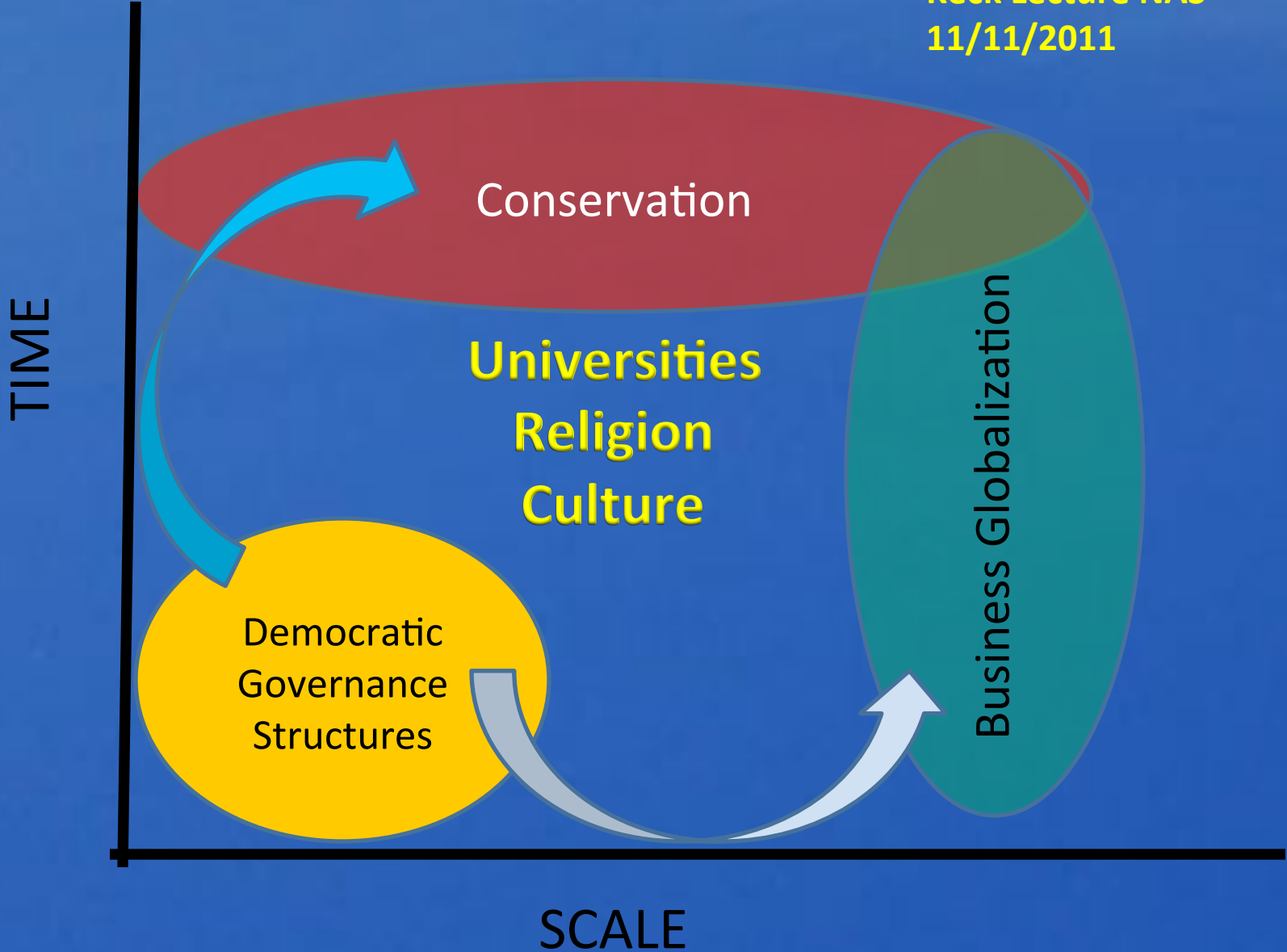
Networked Society

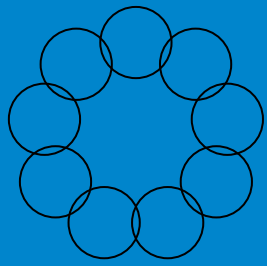


Adapted from Joel Cohen
Keck Lecture NAS
11/11/2011



Adapted from Joel Cohen
Keck Lecture NAS
11/11/2011





Roundtable on the Crown of the Continent:

Connecting People to Sustain and Enhance Culture, Community, and Conservation



One example of linking social scale to ecological scale in addressing climate impacts





Crown of the Continent Initiatives



Public Agencies

Tribes & First Nations

Landowners

Community Leaders

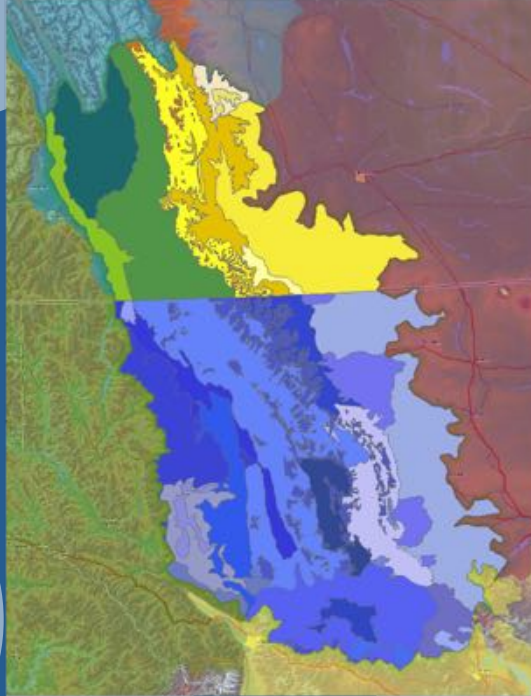
Conservationists


Small Business

Educators

Resource Industries

Researchers





Designed to be inclusive, the Roundtable's mission and goals are articulated by the Leadership Team.

Roundtable Mission

The Roundtable will promote and enhance culture, community, and conservation in the Crown of the Continent by creating opportunities for leaders and citizens to celebrate and honor place, remember history, and imagine a healthy future for all.

Roundtable Goals

Engage and inspire leaders and citizens within the Crown of the Continent to work together on key issues and opportunities.

Connect people to foster respectful dialogue, share successes, and build community and regional identity throughout the Crown of the Continent.

Build capacity and leverage human and financial resources to solve challenges and build resilience against fluctuations in political will and financial resources.

Catalyze new conversations, partnerships, exchanges, projects, and innovative learning opportunities that address shared interests and help prepare future leaders and citizens of the Crown of the Continent.

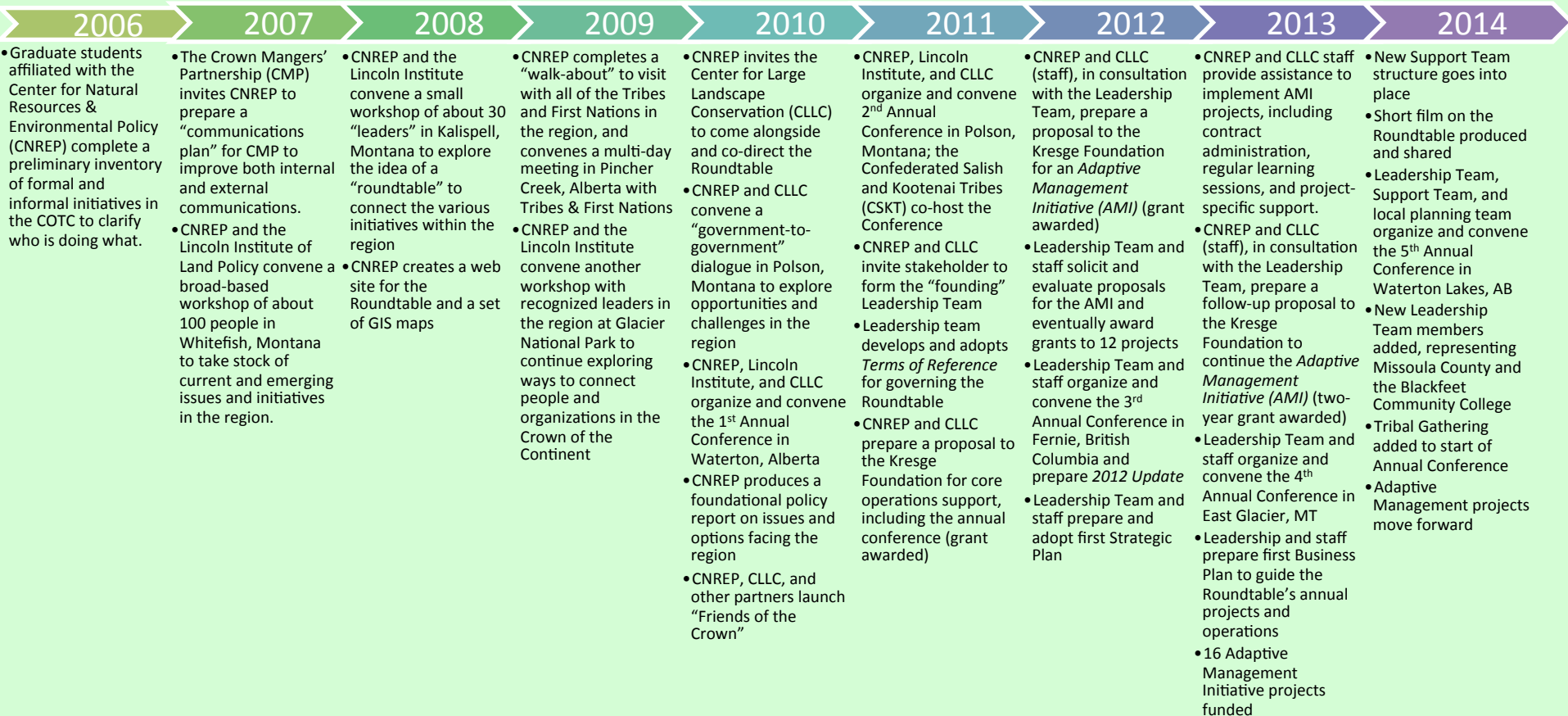
Leadership Team

- Len Broberg – University of Montana
- Mike Bruised Head – Blood Tribe
- Jean Curtiss – Missoula County
- Ian Dyson – Alberta Government
- Shannon Frank – Oldman Watershed
- Rich Janssen – Conf. Salish & Kootenai Tribe
- Shawn Johnson – University of Montana
- Steph Legault – Y2Y
- Jeff Mow – Superintendent Glacier NP
- Sheena Pate – Geotourism Council
- Melly Reuling – Center Large Landscape Conservation
- Mary Sexton – Private landowner
- John Shannon – US Forest Service
- Jim Stone – Blackfoot Challenge
- Paul Travis – Flathead Land Trust
- Melissa Weatherwax – Blackfeet Community College

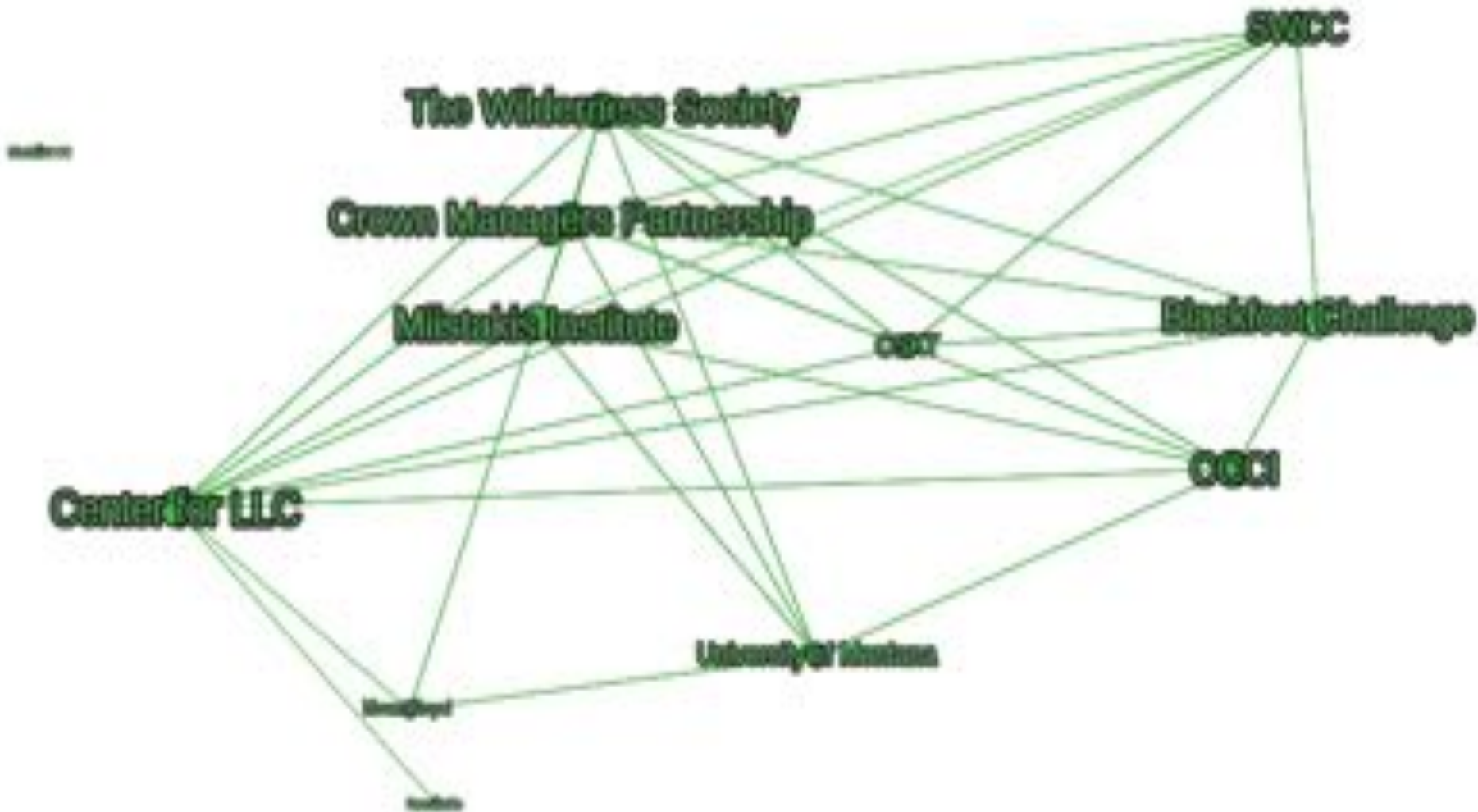




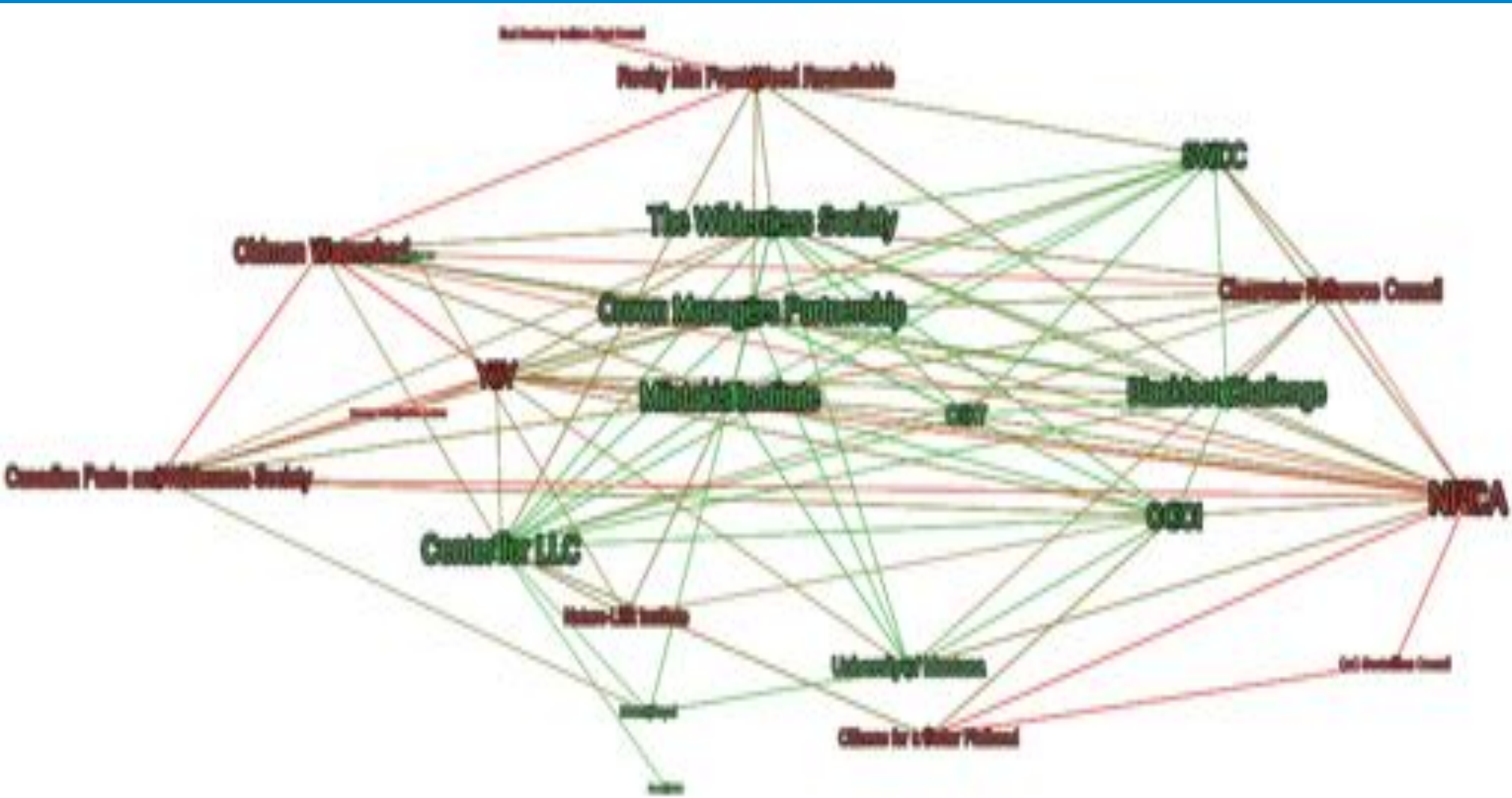
It takes time...



Adaptive Management Organizations Year 1

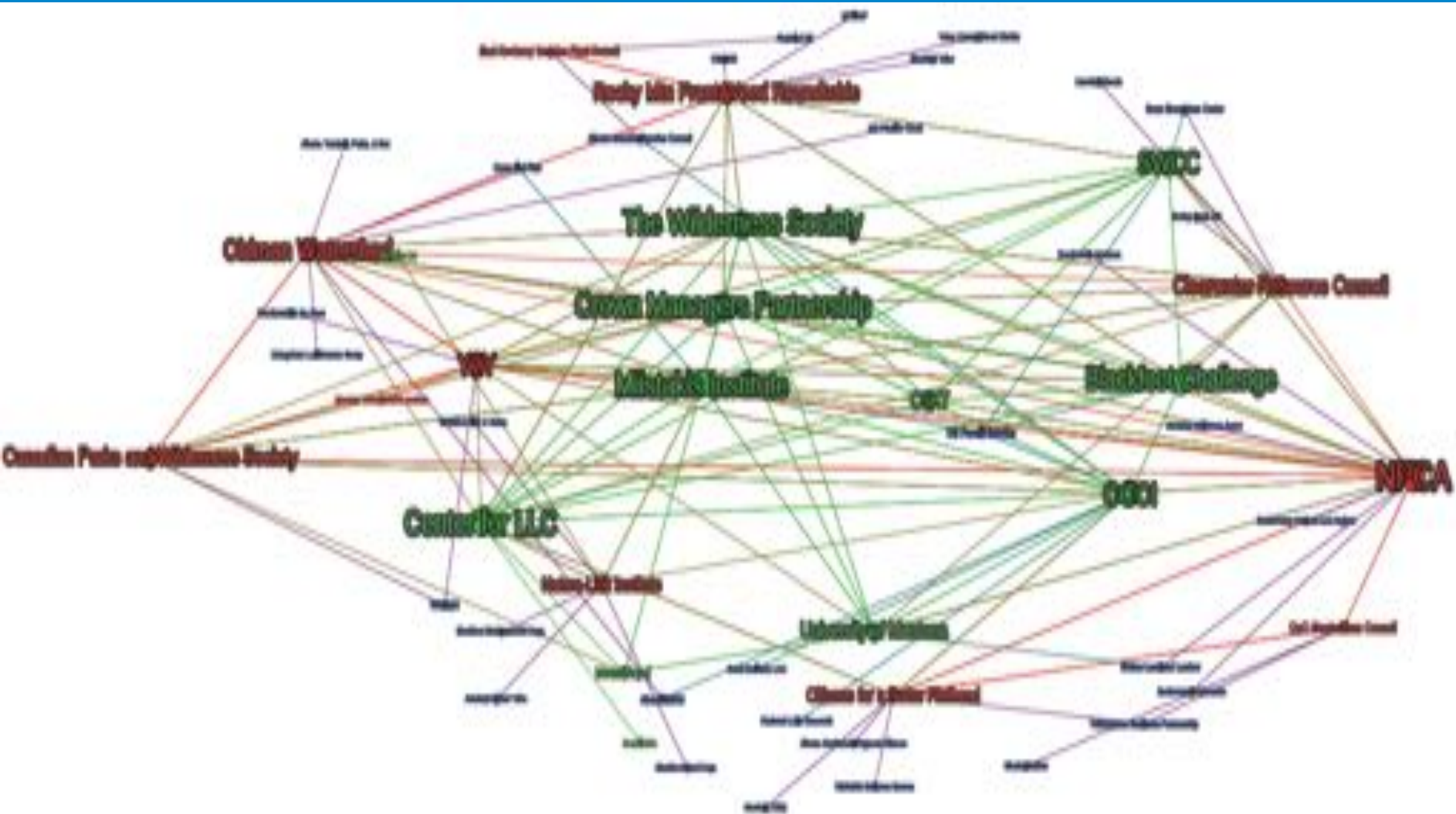


Adaptive Management Organizations Year 2



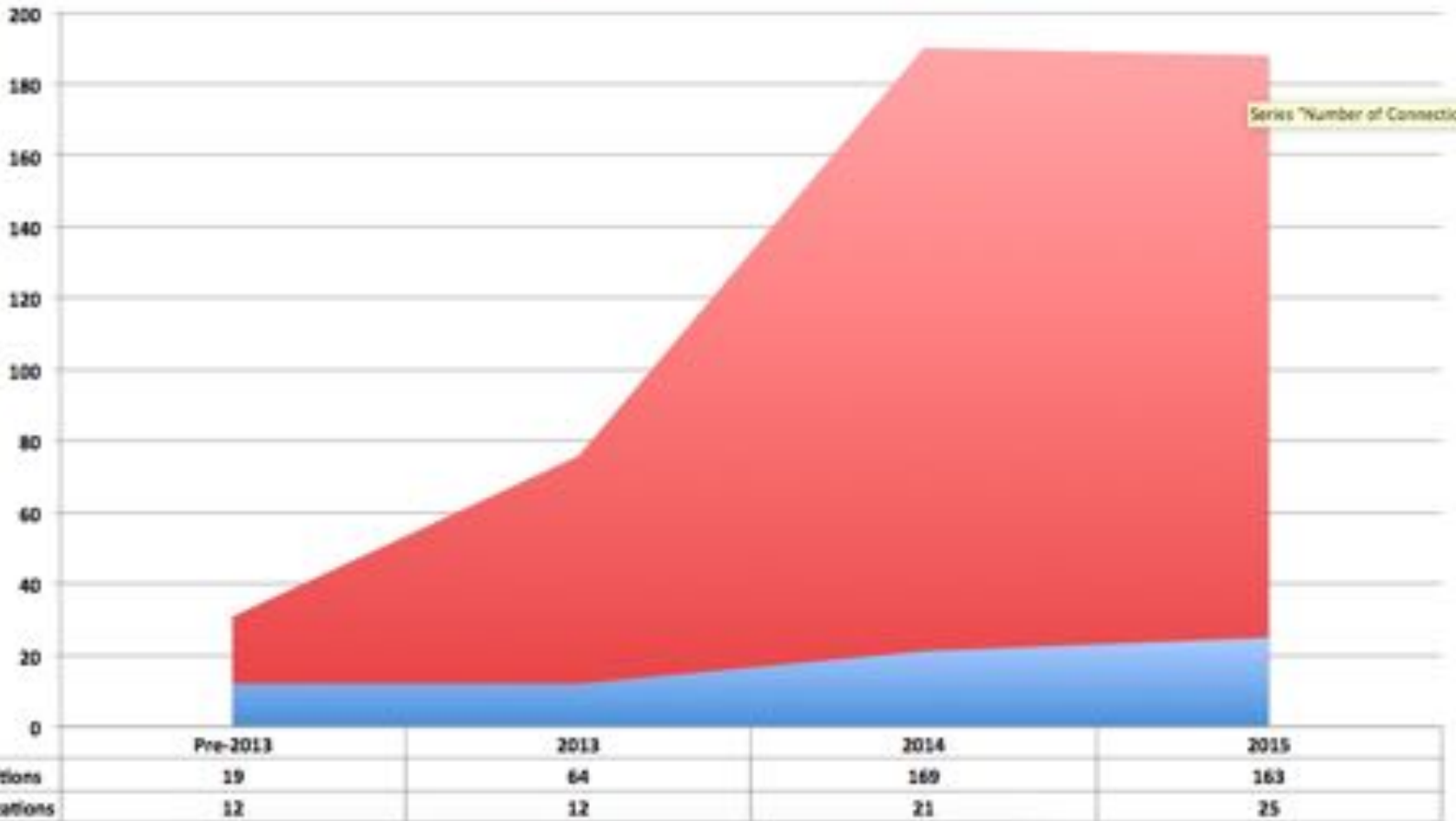
Adaptive Management Organizations

Year 3



Exponential Growth

The Increase in Connections within the AMI Network



COMMUNITY MEETING



THE SWAN & MISSION RANGE A legacy to make Bob (Marshall) proud!



THE ONLY SOLUTION BIG ENOUGH!

WITH MONTANA STATE SENATOR JENNIFER FIELDER
& MONTANA STATE REPRESENTATIVE KERRY WHITE

6PM TUESDAY SEPT 20
Swan Community Center
Condon, MT

COME LEARN ABOUT THE
LAWFUL, PEACEFUL PATH TO
RESTORE BALANCE FOR A
HEALTHY ENVIRONMENT,
ABUNDANT OUTDOOR
RECREATION, & SAFE,
VIBRANT COMMUNITIES!



Land Fragmentation

Pollution

Climate Change

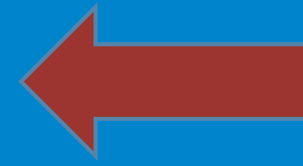
Ozone Hole

Species Loss

Trophic Collapse



Operating Space
for
Humanity
and Nature



Work

Food Security

Poverty

Health

Economy

Civil Rights

100000000000000 RESERVE BANK OF ZIMBABWE

100000000000000

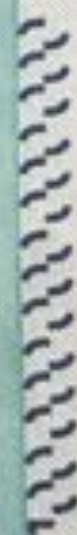
*I promise to pay
the bearer on demand*

AA0307883
**ONE HUNDRED
TRILLION
DOLLARS**

for the Reserve Bank of Zimbabwe



100 000 000 000 000 HARARE 2008



AA0307883

One Giant Leap: Saving the Planet – One Large Landscape at a time.



www.largelandscapes.org

THE CENTER FOR
LARGE LANDSCAPE
CONSERVATION

