

# The Benefit of a Compelling Shared Vision: Yellowstone to Yukon

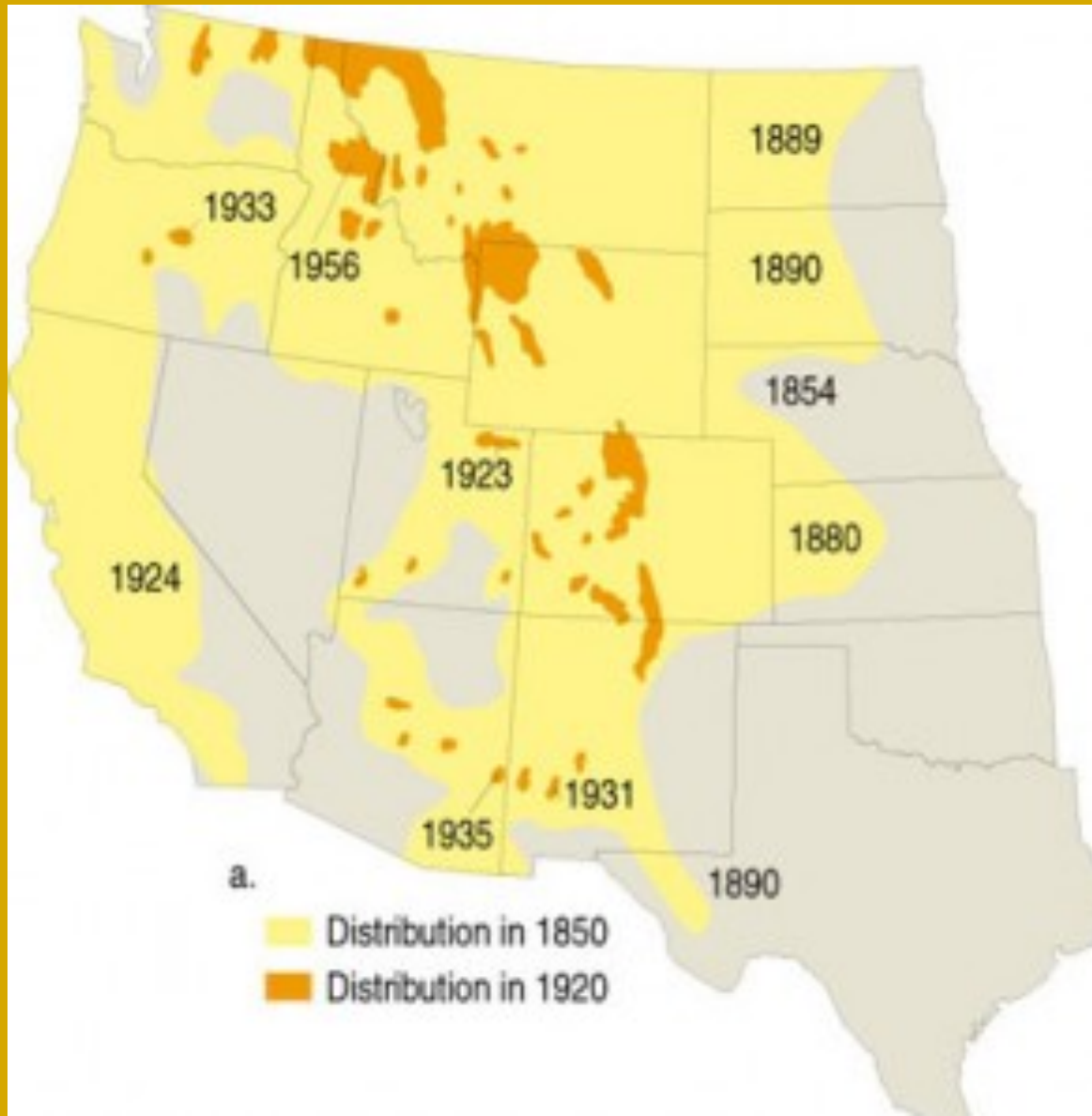
Jodi Hilty, Ph.D.  
President and Chief Scientist



YELLOWSTONE TO YUKON  
CONSERVATION INITIATIVE



# Grizzly bear range loss



# Movements of PLUIE the wolf 1992-93



TELEMETRY DATA  
COURTESY OF  
WOLF AWARENESS INC.

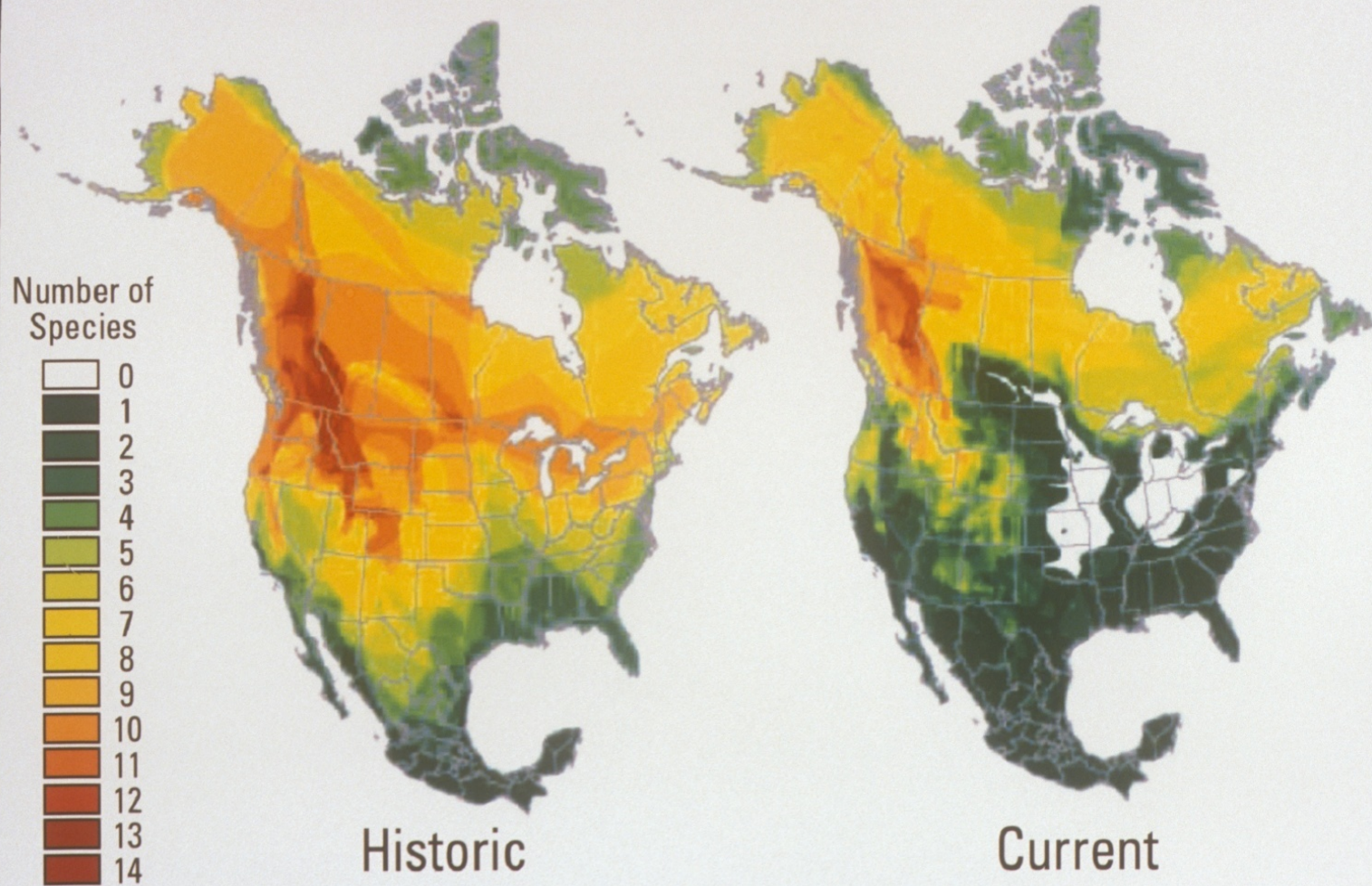


## LEGEND

Protected Areas

Ecology Center GIS  
ecocenter@wildrockies.org

# Historic and Current Distribution of Carnivores and Ungulates



Source - Range Contractions of North American Carnivores and Ungulates - Andrea S. Laliberte and William J. Ripple

# Y2Y Corridor

1.3 million km<sup>2</sup>

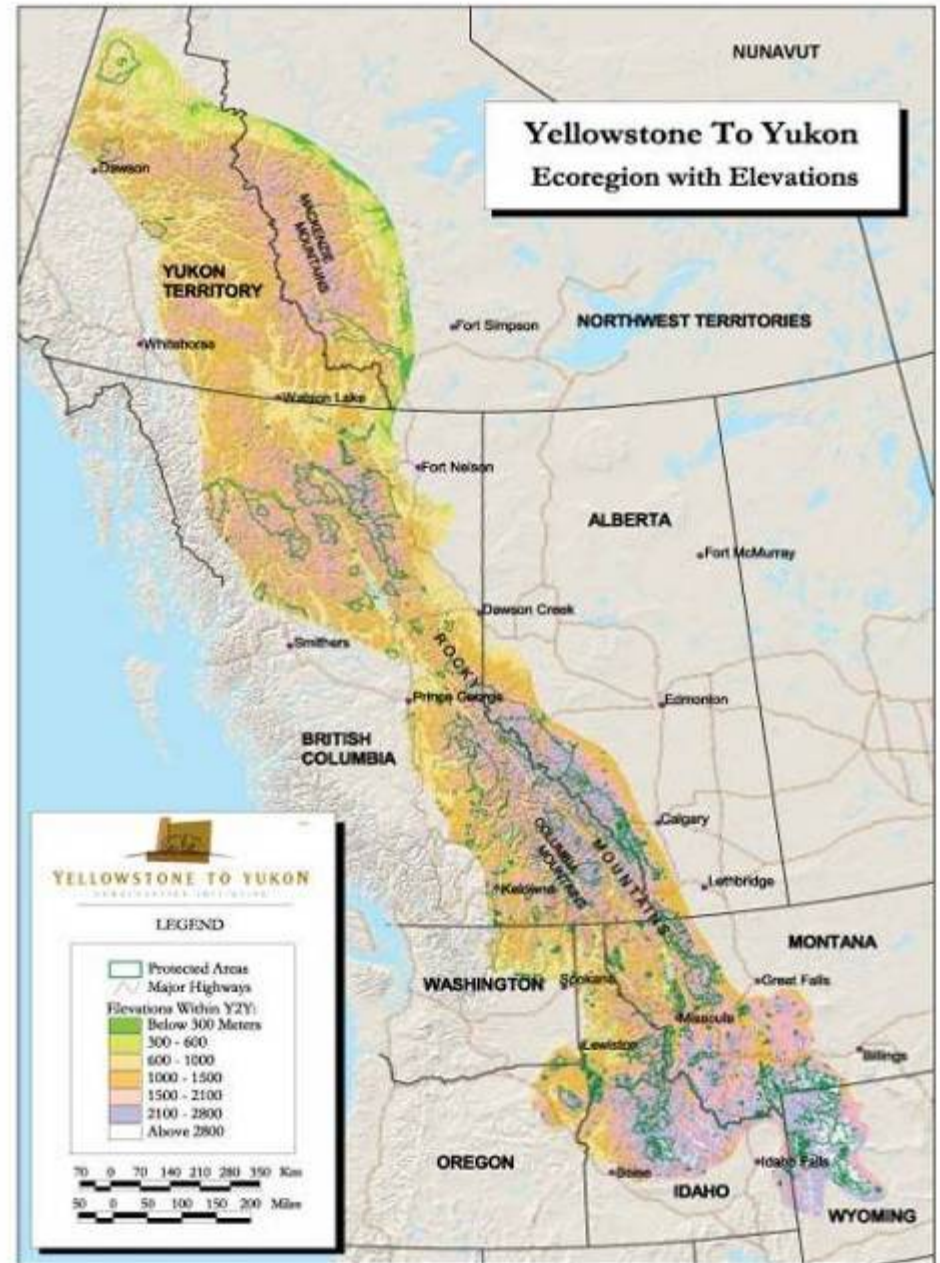
(500 sq mls)

3200 km long

5 American States

2 Provinces

2 Territories



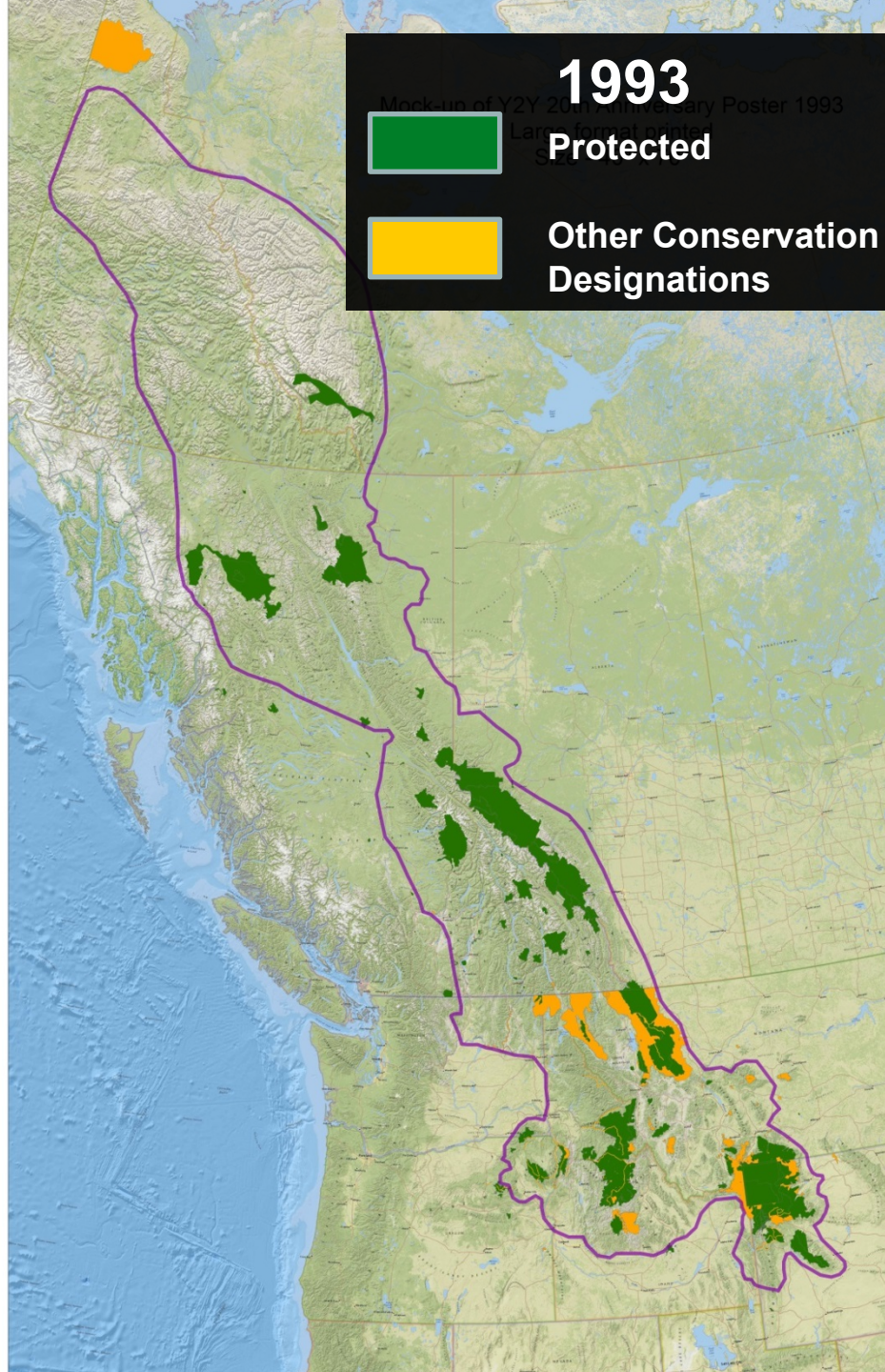
# Conservation Partners – TOGETHER MOVING FORWARD Y2Y VISION

- Land Trusts
- Advocacy/litigation/lobbying groups
- Scientists (academics, think tanks)
- Land and wildlife managers (government)
- Funders – individuals, foundation, corporate



11%  
protected

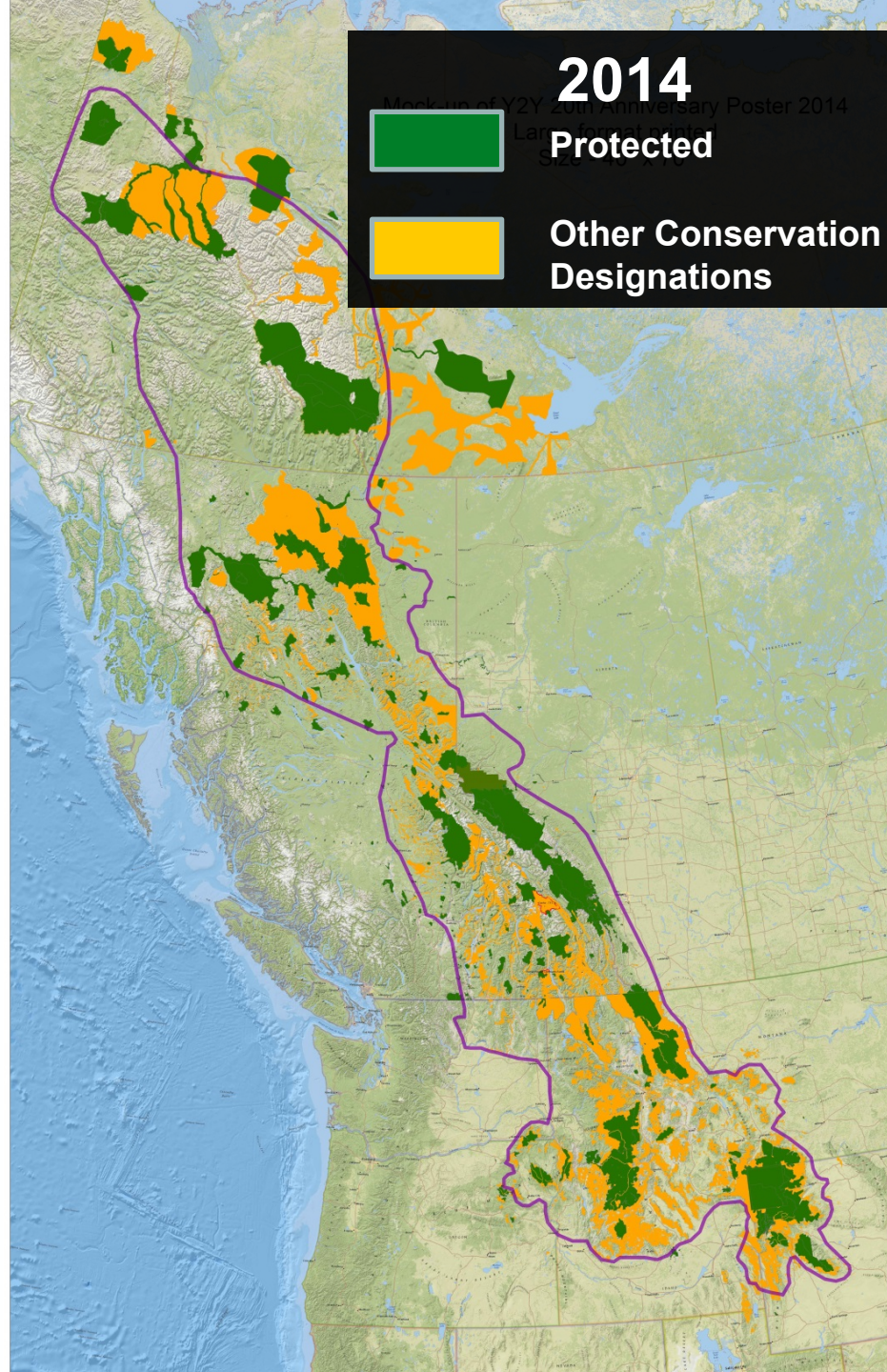
1% other  
conservation  
designations

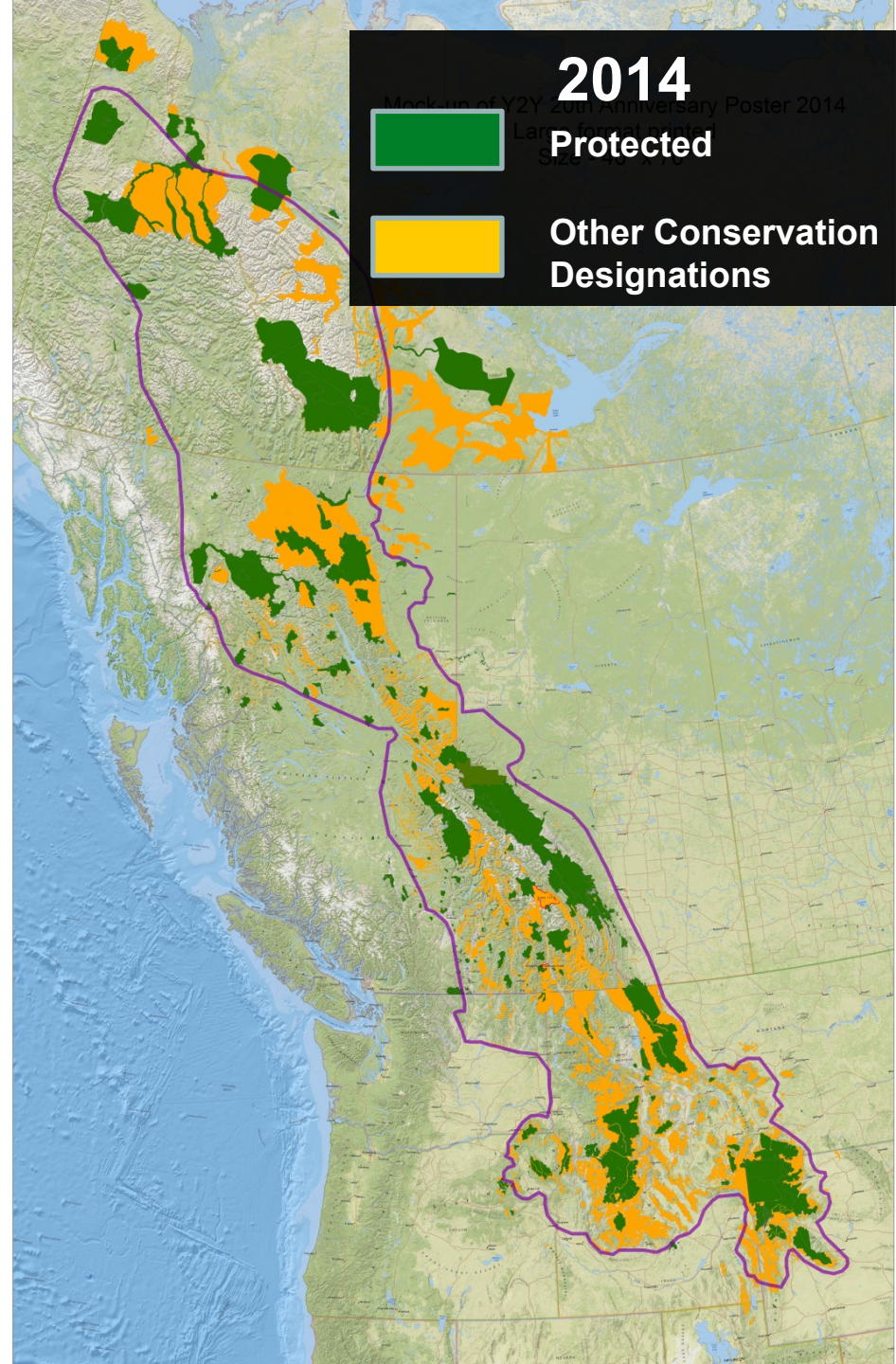
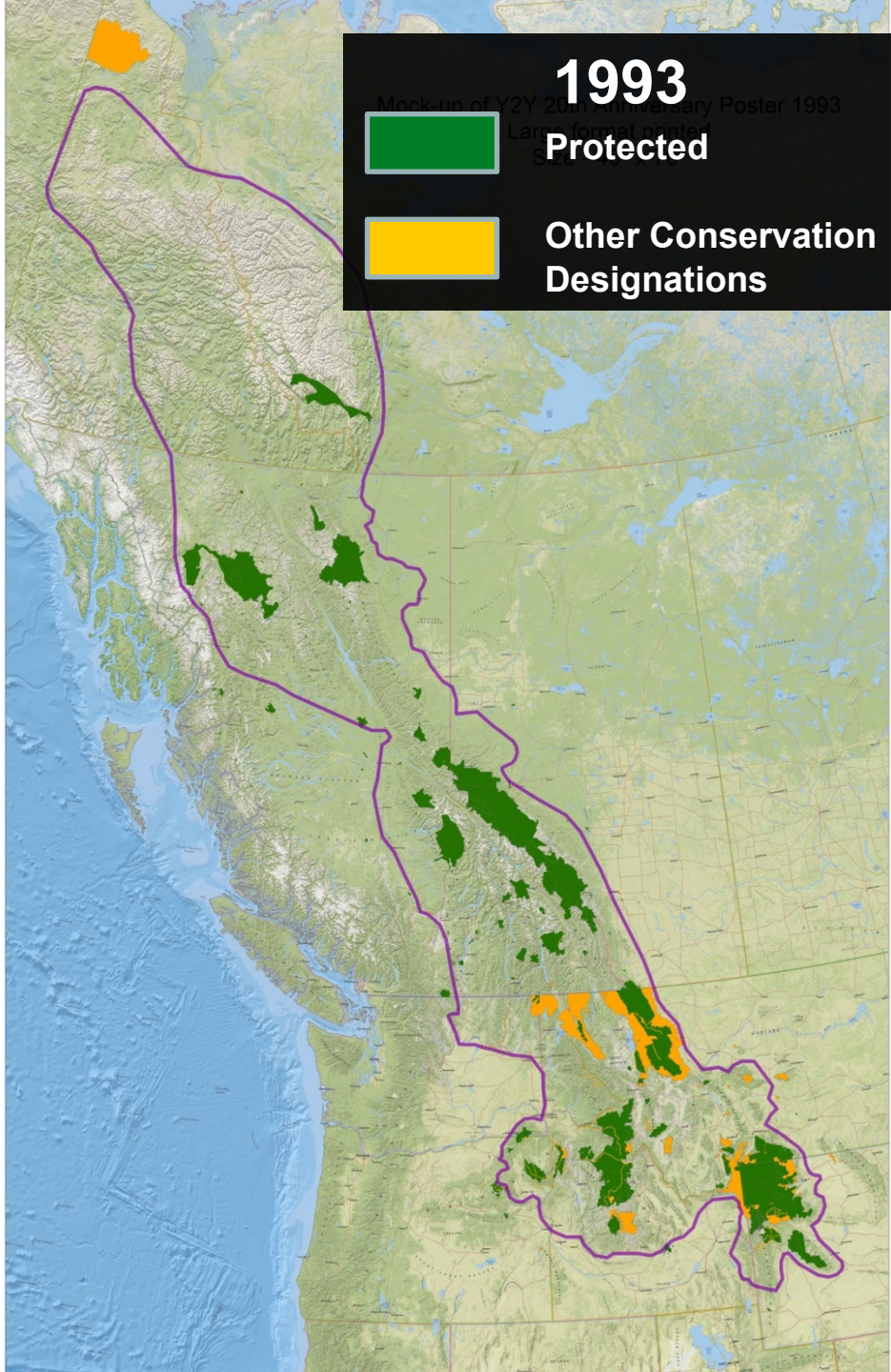




21%  
protected

31% other  
conservation  
designations





# Non-extensive Conservation



Banff

# Flathead Indian Reservation, MT



JHilty

# Behind one of the Nature Conservancy's largest ever forest purchases

Backing a \$134m land acquisition is a financial institution which wants to raise money from investors who care about the environment

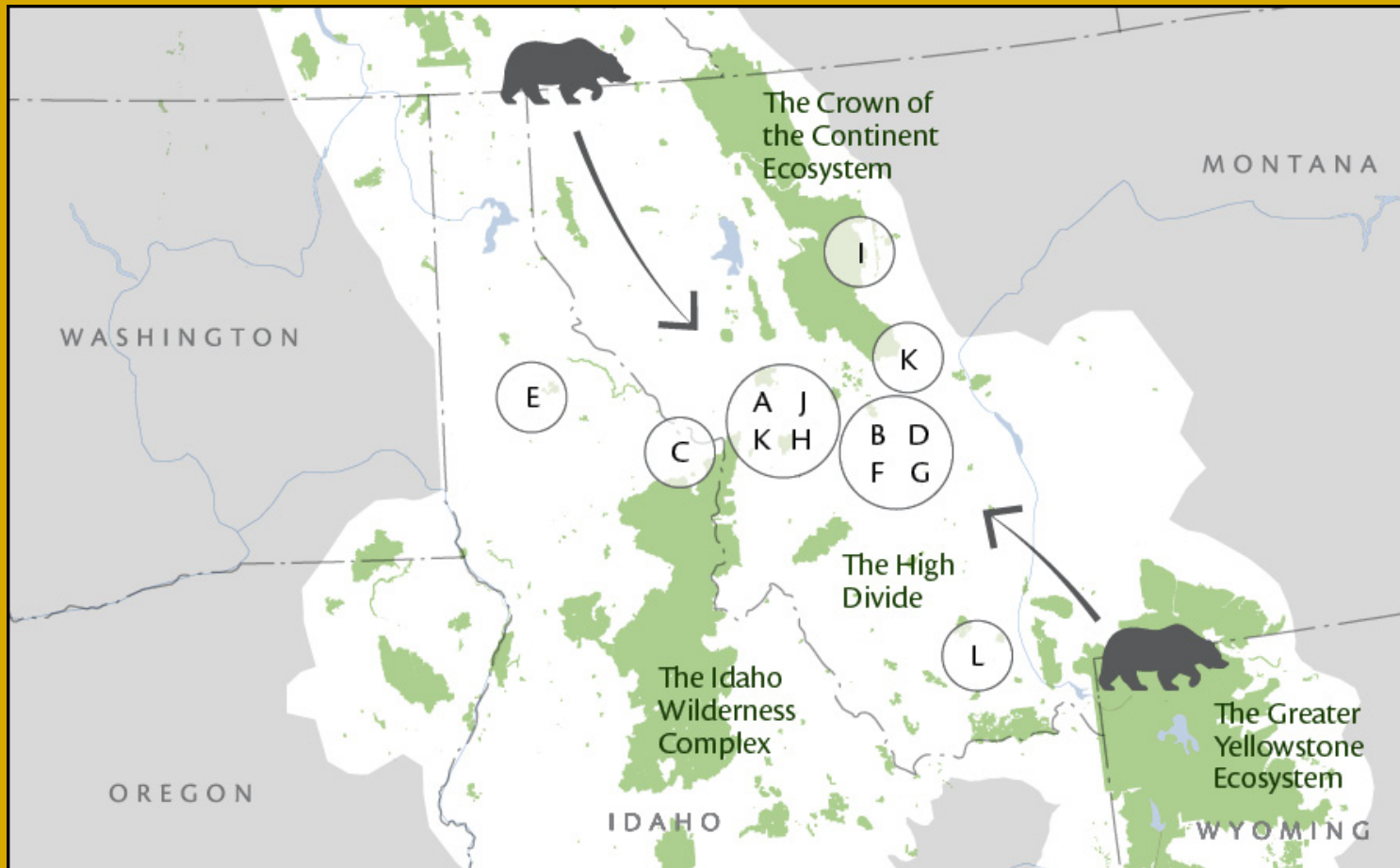


 The Nature Conservancy bought land in Montana's Blackfoot River Valley, backed by a bank whose purpose is to protect nature. Photograph: The Nature Conservancy

A large herd of deer is captured in motion, running across a snowy landscape. The deer are in various stages of their stride, with some leading and others following. The snow is bright white, and the deer's fur is a mix of brown and tan. The overall scene is dynamic and energetic.

# 1<sup>st</sup> USA Federally Designated Wildlife Corridor

Currently grizzlies are within 100 miles of each other in western Central Montana – the closest they have been in over 100 years.



# INSPIRE and ENGAGE

- > 100 million people expose to Y2Y vision
- > Half a dozen books/full magazines focused on Y2Y
- Dozens art and film projects

## Wildways – PBS Nova film 2016



*The New York Times*

## Environment

### Home on the Range: A Corridor for Wildlife



Florian Schulz/Visions of the Wild

The Rockies are among the last refuges of animals like the bighorn sheep.



# Next steps





**Canada**

**USA**

**Selkirk Mts**

**Purcell  
Yaak**

**Rocky Mts**

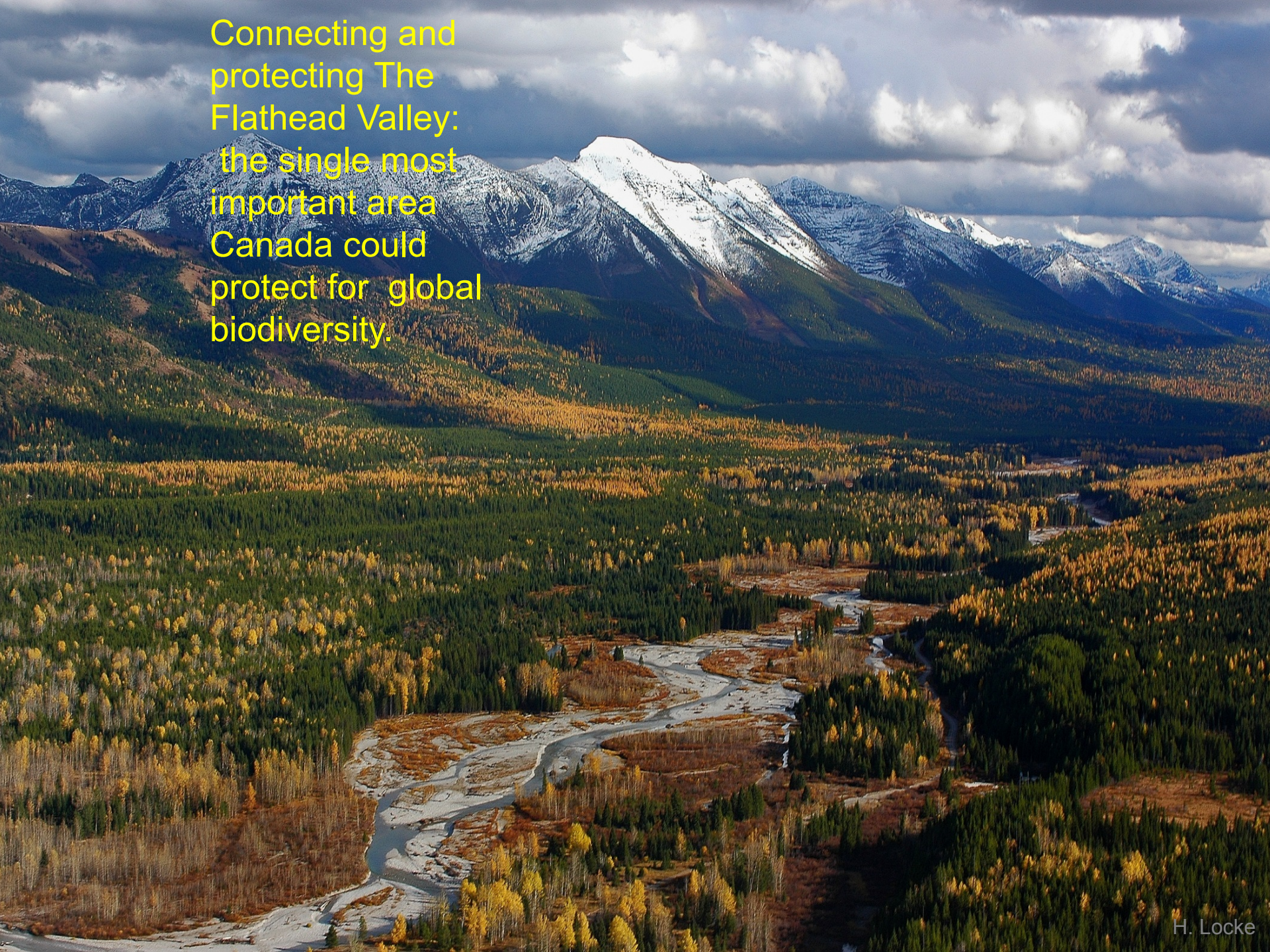
**Cabinets**

**Bitterroot  
Recovery  
Zone**

**Yellowstone**

0 100 200 Km

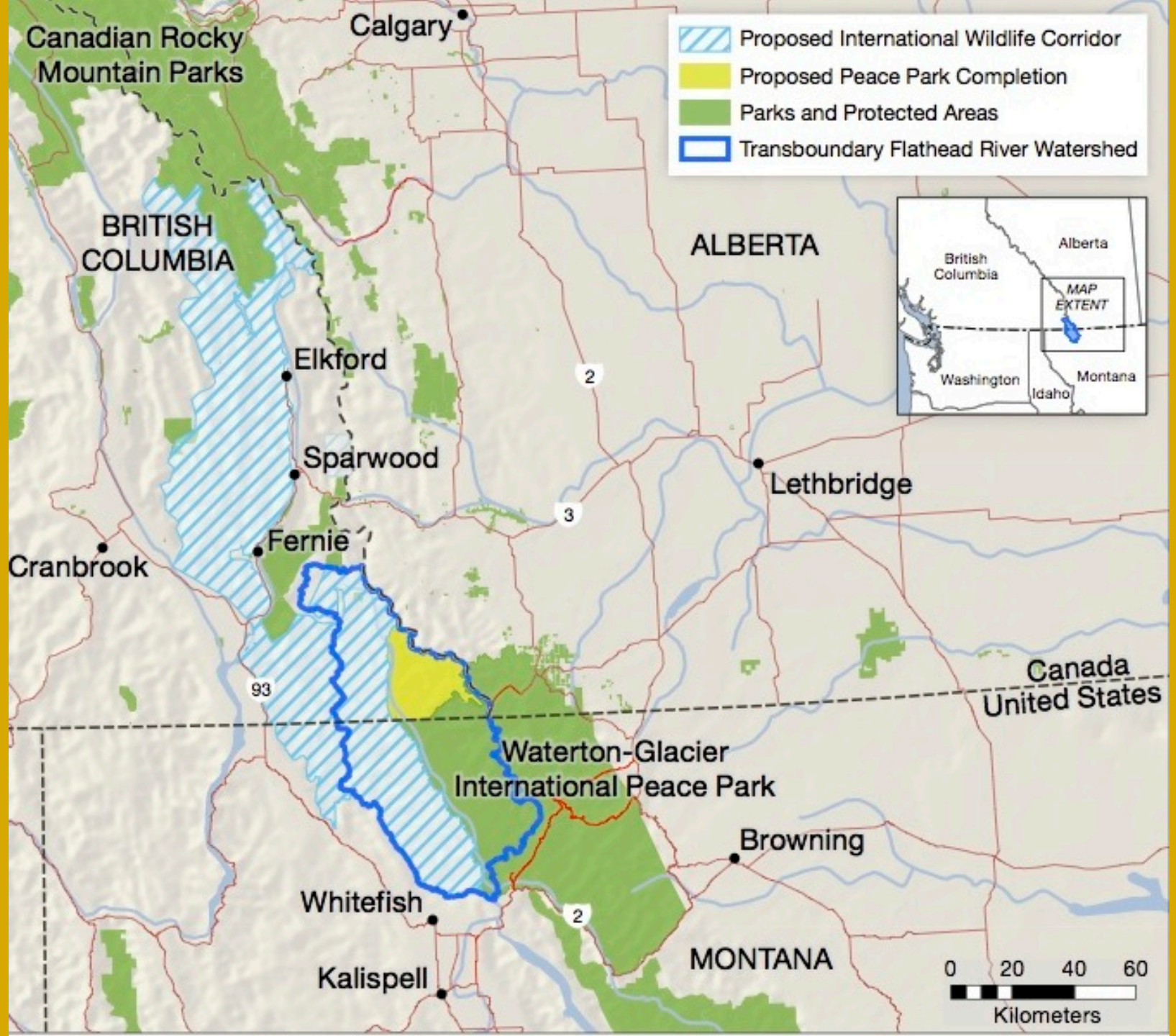
Connecting and  
protecting The  
Flathead Valley:  
the single most  
important area  
Canada could  
protect for global  
biodiversity.



# The FLATHEAD RIVER VALLEY:



Map courtesy of Peter Poole



# Immigration and associated sprawl




## Outside's Best Towns 2013

*These are the best places to live in America.*

By: Kyle Dickman Aug 12, 2013



# Peace River Break Linear Impact

-  Protected Areas
-  Peace River Break Boundary
-  Linear Impact



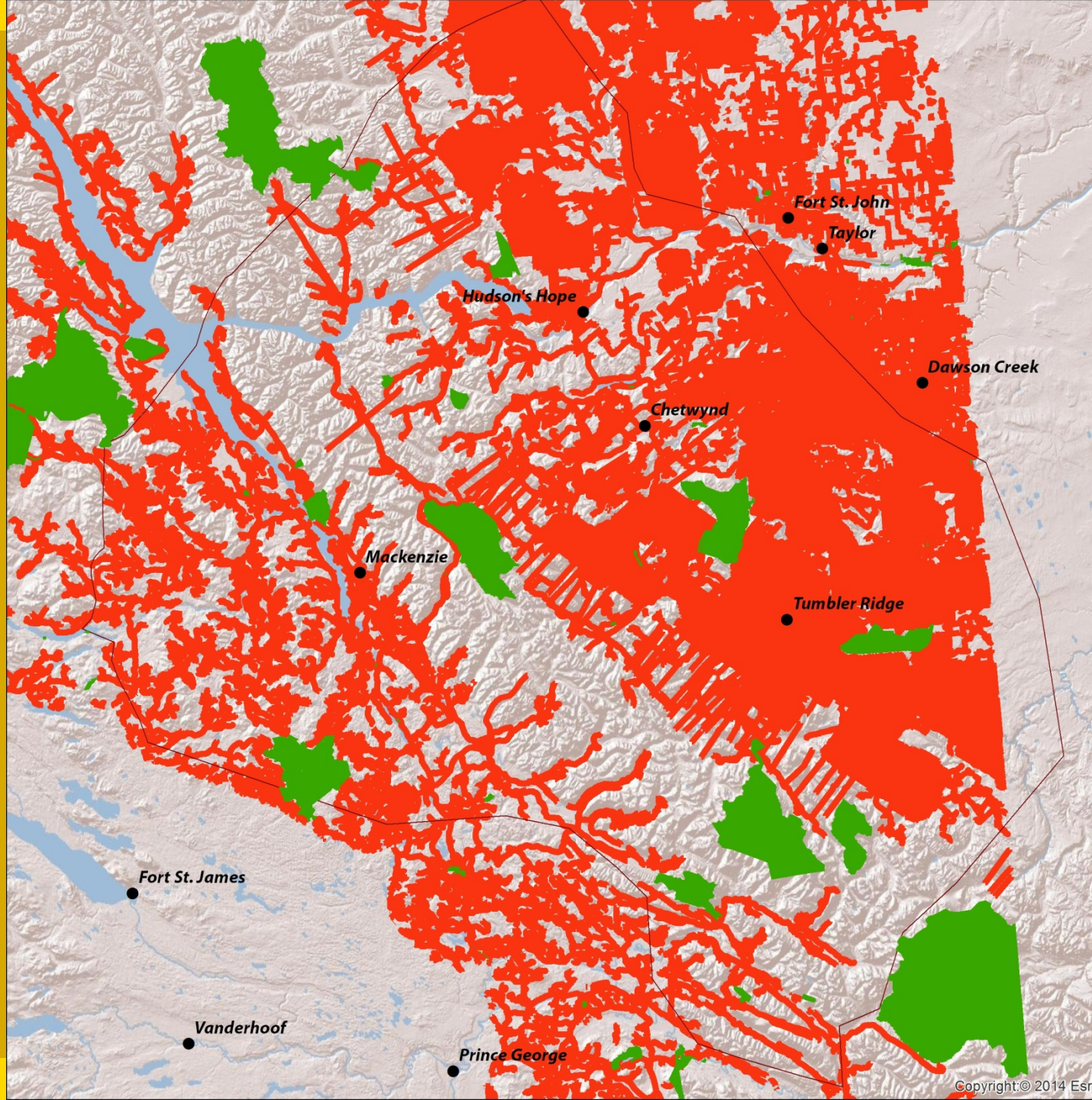
0 5 10 20 30 40  
Kilometers

1:1,600,000



Yellowstone to Yukon  
Conservation Initiative

[www.y2y.net](http://www.y2y.net)



It's a battle long fought, but seldom won: Fights over use of lands.





